

Anwendung

Dachventilatoren ROOF-V sind bestimmt zum Lüften von:

- Lagerhallen, Laden- und Industriehallen, Wirtschaftsgebäude in der Landwirtschaft usw.

Aufgrund ihrer hohen Temperaturbeständigkeit sind sie besonders zu empfehlen als Heißluftabzüge:

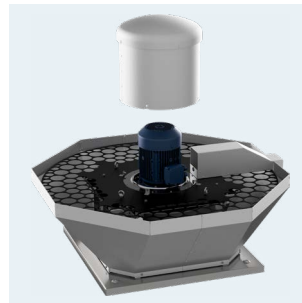
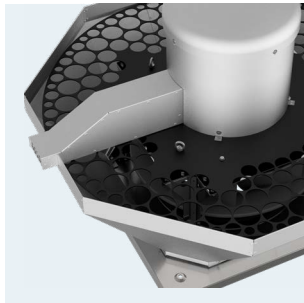
- von Grillrosten, von Abzughauben
- in der Fleischindustrie und Gastronomie.

Konstruktion

- Laufrad mit rückwärtsgekrümmten Schaufeln, aus Aluminiumblech,
- Unterbau und Außengehäuse aus Aluminiumblech,
- Motorhalterungen und Motorträgerplatte aus Edelstahl,
- Motorabdeckung aus Alublech,
- Edelstahl-Schutzgitter,
- geeignet für Arbeiten in vertikaler Position,
- Installation auf Flachdächern,
- Arbeitstemperatur von -40°C bis $+120^{\circ}\text{C}$.

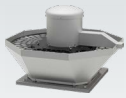
Elektrischer Motor

- asynchron, einphasig, 230V, 50Hz (bis 1,1 kW),
- asynchron, dreiphasig, 230/400V, 50Hz (bis 3 kW),
- asynchron, dreiphasig, 400/690V, 50Hz (mit einer Leistung von 4 kW),
- Schutzart IP55,
- Isolationsklasse F,
- an Spannungsregelung angepasst (Einphasenmotoren),
- angepasst an Frequenzregelung (Drehstrommotoren).



VERWANDTE PRODUKTE

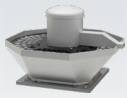




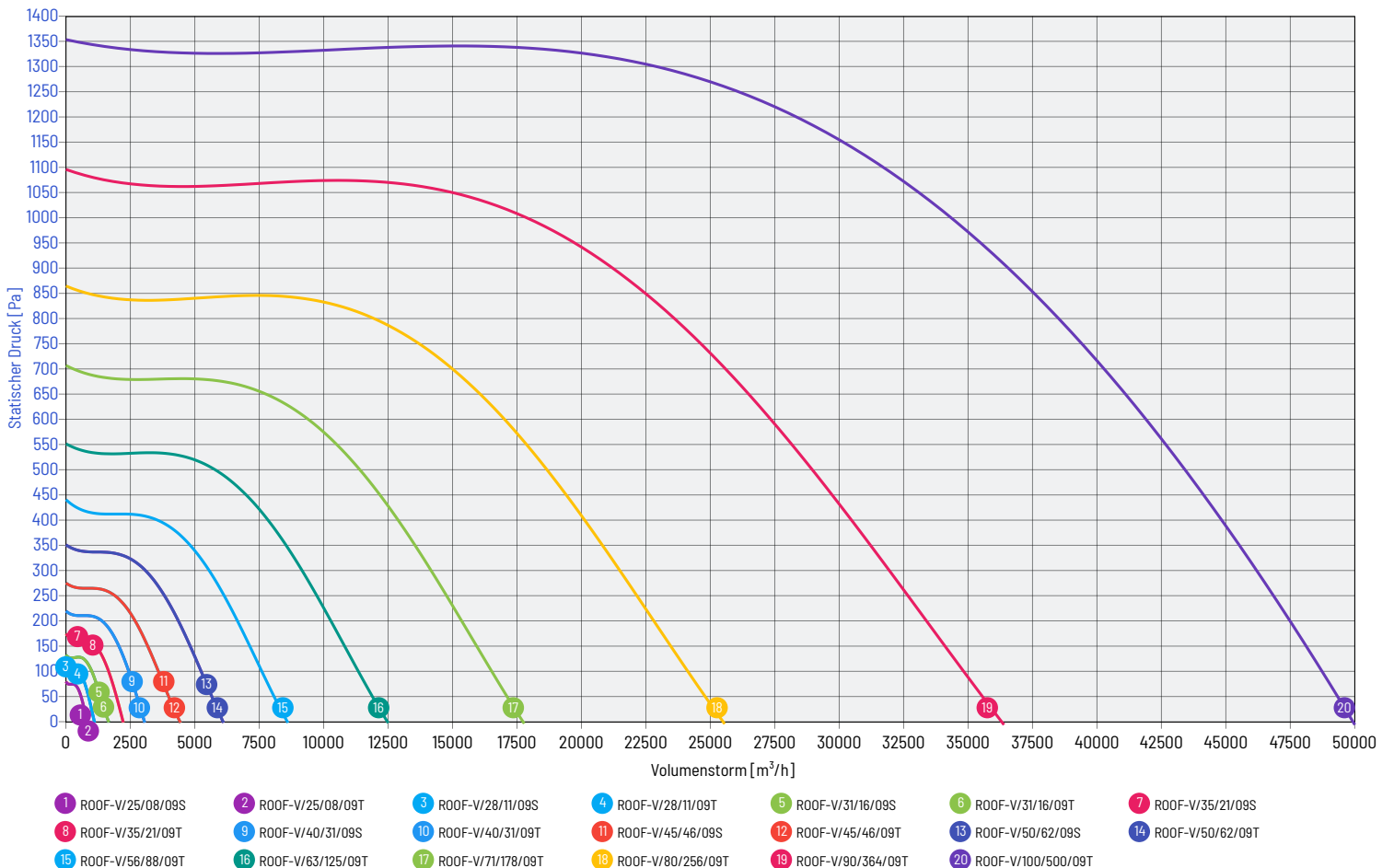
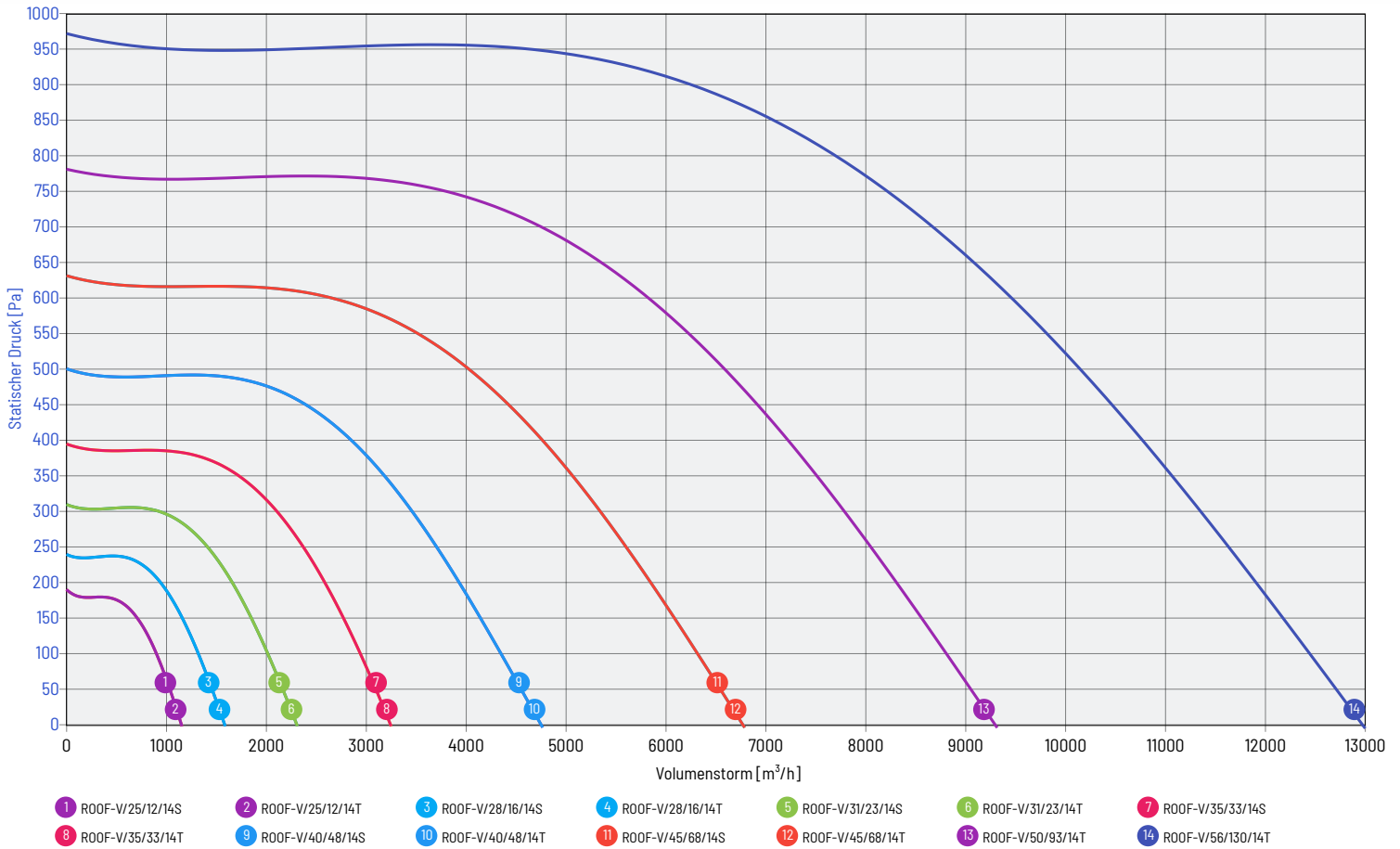
NENNDATEN

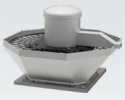
type	Volumestrom max	Druck max	Motor Drehzahl	Nennspannung	Nennstrom**	Nennleistung	Schalldruckpegel*	Masse	Artikelnummer
EINPHASIGE, 4-POLIGE MOTOREN									
ROOF-V/25/12/14S	1 150 m³/h	190 Pa	1 420 rpm	230 V	1,4 A	0,18 kW	52 dB(A)	19,0 kg	43534496
ROOF-V/28/16/14S	1 600 m³/h	240 Pa	1 430 rpm	230 V	2,5 A	0,25 kW	55 dB(A)	21,0 kg	43534501
ROOF-V/31/23/14S	2 300 m³/h	310 Pa	1 420 rpm	230 V	2,8 A	0,37 kW	58 dB(A)	27,0 kg	43534506
ROOF-V/35/33/14S	3 280 m³/h	395 Pa	1 430 rpm	230 V	3,8 A	0,55 kW	61 dB(A)	35,0 kg	43534511
ROOF-V/40/48/14S	4 780 m³/h	500 Pa	1 430 rpm	230 V	4,1 A	0,75 kW	63 dB(A)	41,0 kg	43534516
ROOF-V/45/68/14S	6 800 m³/h	630 Pa	1 300 rpm	230 V	7,5 A	1,1 kW	66 dB(A)	50,0 kg	43534521
EINPHASIGE, 6-POLIGE MOTOREN									
ROOF-V/25/08/09S	760 m³/h	80 Pa	880 rpm	230 V	1,4 A	0,12 kW	51 dB(A)	20,0 kg	43534498
ROOF-V/28/11/09S	1 060 m³/h	110 Pa	880 rpm	230 V	1,4 A	0,12 kW	53 dB(A)	20,0 kg	43534503
ROOF-V/31/16/09S	1 570 m³/h	135 Pa	880 rpm	230 V	1,4 A	0,12 kW	56 dB(A)	25,0 kg	43534508
ROOF-V/35/21/09S	2 140 m³/h	175 Pa	920 rpm	230 V	1,6 A	0,18 kW	58 dB(A)	31,0 kg	43534513
ROOF-V/40/31/09S	3 080 m³/h	220 Pa	940 rpm	230 V	2,0 A	0,25 kW	61 dB(A)	37,0 kg	43534518
ROOF-V/45/46/09S	4 570 m³/h	275 Pa	930 rpm	230 V	2,9 A	0,37 kW	64 dB(A)	40,0 kg	43534523
ROOF-V/50/62/09S	6 180 m³/h	350 Pa	940 rpm	230 V	5,2 A	0,75 kW	67 dB(A)	60,0 kg	43534528
DREIPHASIGE, 4-POLIGE MOTOREN									
ROOF-V/25/12/14T	1 150 m³/h	190 Pa	1 400 rpm	400 V	0,55 A	0,18 kW	52 dB(A)	19,0 kg	43534495
ROOF-V/28/16/14T	1 600 m³/h	240 Pa	1 410 rpm	400 V	0,8 A	0,25 kW	55 dB(A)	22,0 kg	43534500
ROOF-V/31/23/14T	2 300 m³/h	310 Pa	1 410 rpm	400 V	1,1 A	0,37 kW	58 dB(A)	27,0 kg	43534505
ROOF-V/35/33/14T	3 280 m³/h	395 Pa	1 420 rpm	400 V	1,6 A	0,55 kW	61 dB(A)	36,0 kg	43534510
ROOF-V/40/48/14T	4 780 m³/h	500 Pa	1 430 rpm	400 V	2,1 A	0,75 kW	63 dB(A)	41,0 kg	43534515
ROOF-V/45/68/14T	6 800 m³/h	630 Pa	1 430 rpm	400 V	2,5 A	1,1 kW	66 dB(A)	56,0 kg	43534520
ROOF-V/50/93/14T	9 300 m³/h	780 Pa	1 450 rpm	400 V	4,6 A	2,2 kW	69 dB(A)	80,0 kg	43534525
ROOF-V/56/130/14T	13 000 m³/h	970 Pa	1 460 rpm	400 V	6,7 A	3,0 kW	73 dB(A)	91,0 kg	43534530
DREIPHASIGE, 6-POLIGE MOTOREN									
ROOF-V/25/08/09T	760 m³/h	80 Pa	870 rpm	400 V	0,65 A	0,12 kW	51 dB(A)	21,0 kg	43534497
ROOF-V/28/11/09T	1 060 m³/h	110 Pa	870 rpm	400 V	0,65 A	0,12 kW	53 dB(A)	21,0 kg	43534502
ROOF-V/31/16/09T	1 570 m³/h	135 Pa	870 rpm	400 V	0,65 A	0,12 kW	56 dB(A)	26,0 kg	43534507
ROOF-V/35/21/09T	2 140 m³/h	175 Pa	900 rpm	400 V	0,7 A	0,18 kW	58 dB(A)	31,0 kg	43534512
ROOF-V/40/31/09T	3 080 m³/h	220 Pa	880 rpm	400 V	1,0 A	0,25 kW	61 dB(A)	36,0 kg	43534517
ROOF-V/45/46/09T	4 570 m³/h	275 Pa	880 rpm	400 V	1,3 A	0,37 kW	64 dB(A)	44,0 kg	43534522
ROOF-V/50/62/09T	6 180 m³/h	350 Pa	940 rpm	400 V	2,0 A	0,75 kW	67 dB(A)	62,0 kg	43534527
ROOF-V/56/88/09T	8 700 m³/h	440 Pa	940 rpm	400 V	2,8 A	1,1 kW	71 dB(A)	76,0 kg	43534532
ROOF-V/63/125/09T	12 490 m³/h	550 Pa	965 rpm	400 V	5,0 A	2,2 kW	72 dB(A)	118,0 kg	43534537
ROOF-V/71/178/09T	17 770 m³/h	705 Pa	965 rpm	400 V	6,2 A	3,0 kW	78 dB(A)	158,0 kg	43534542
ROOF-V/80/256/09T	25 600 m³/h	860 Pa	960 rpm	400 V	13,3 A	5,5 kW	82 dB(A)	188,0 kg	43534547
ROOF-V/90/364/09T	36 400 m³/h	1 090 Pa	970 rpm	400 V	21,4 A	11,0 kW	86 dB(A)	335,0 kg	43534552
ROOF-V/100/500/09T	50 000 m³/h	1 350 Pa	980 rpm	400 V	36,4 A	18,5 kW	89 dB(A)	500,0 kg	43534557

* Messung in 1,5 m Entfernung vom Auslass, für $Q = 2/3 \cdot Q_{max}$
 ** Der Nennstrom ist abhängig von eingesetztem Motorfabrikat.

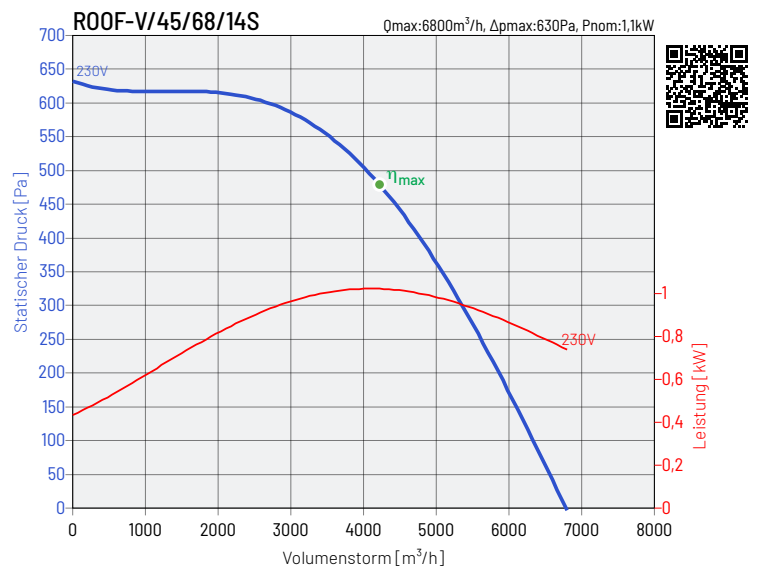
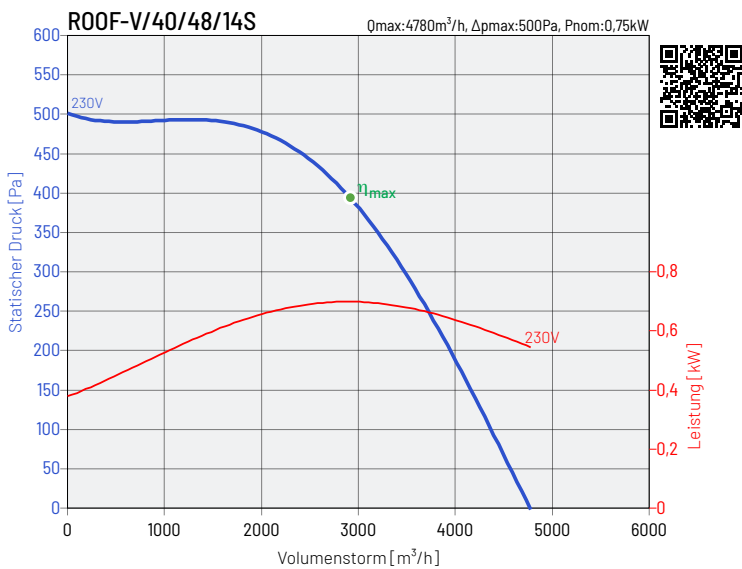
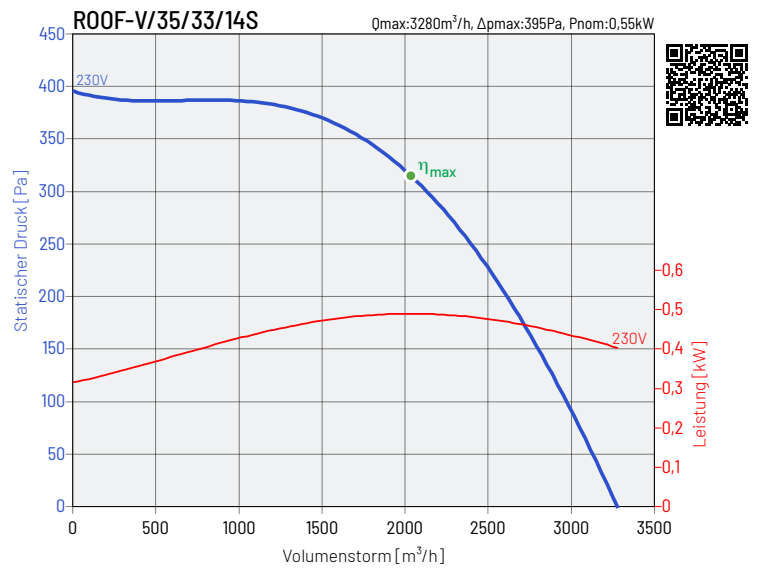
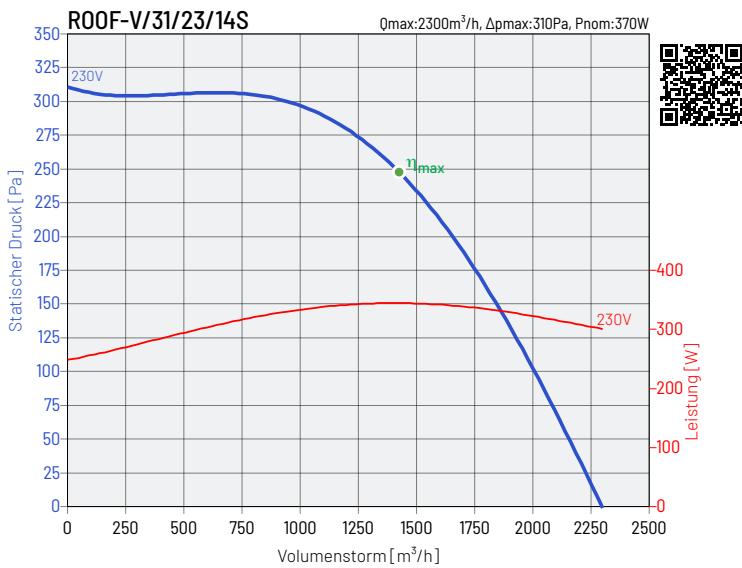
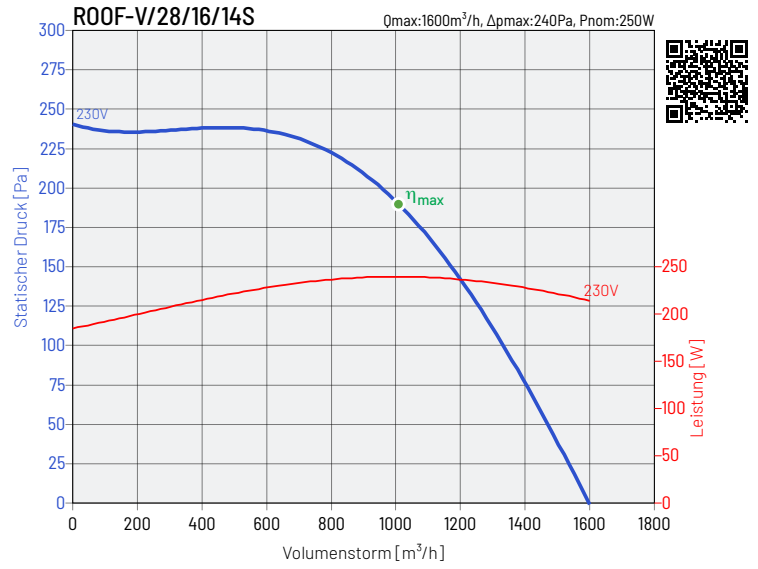
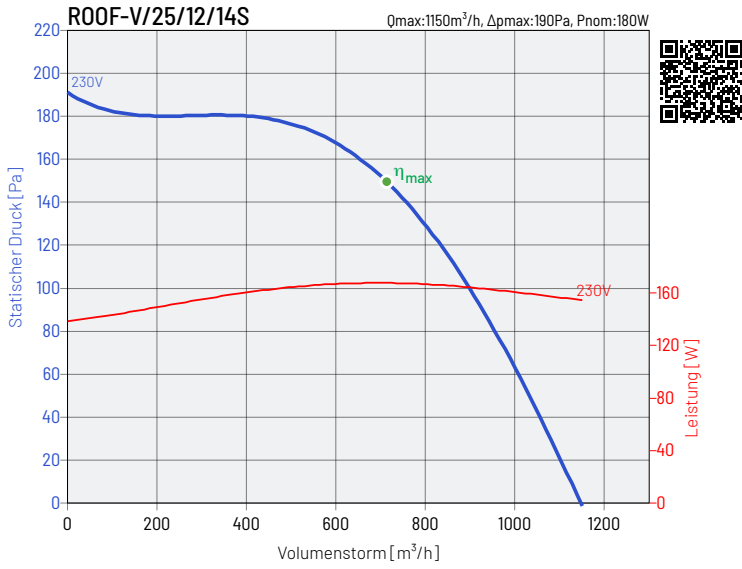


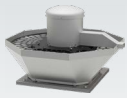
KENNLINIEN DER VENTILATOREN



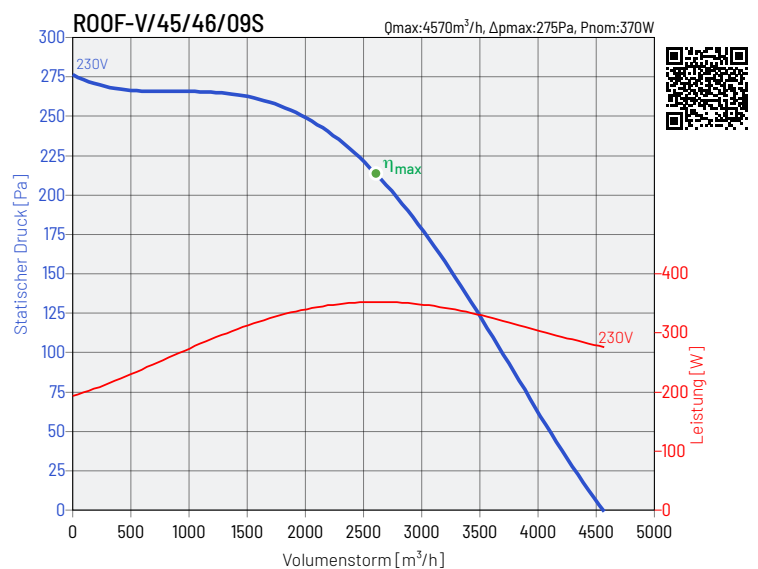
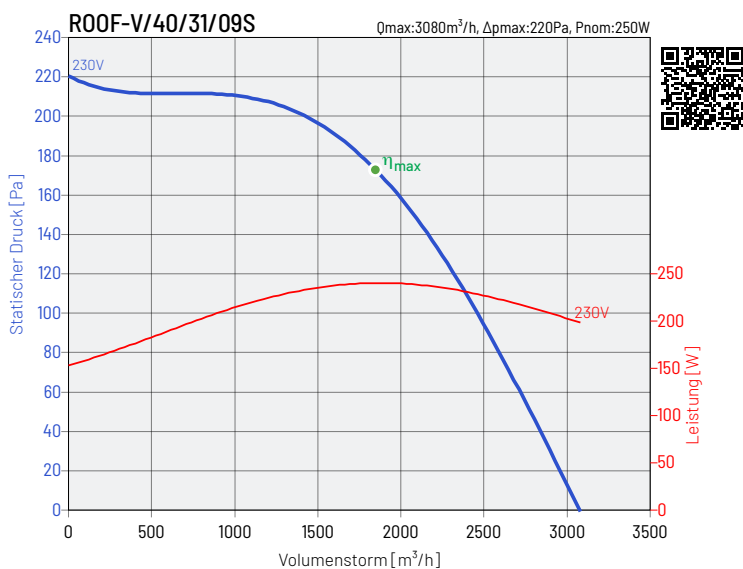
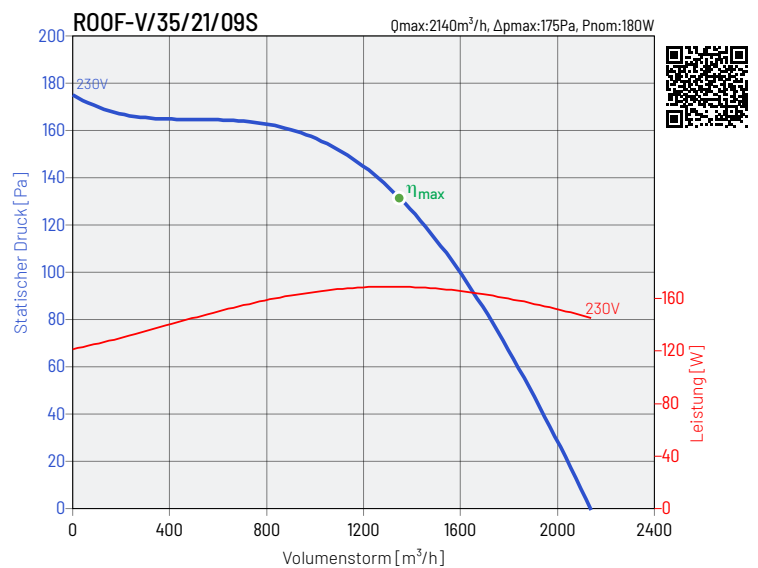
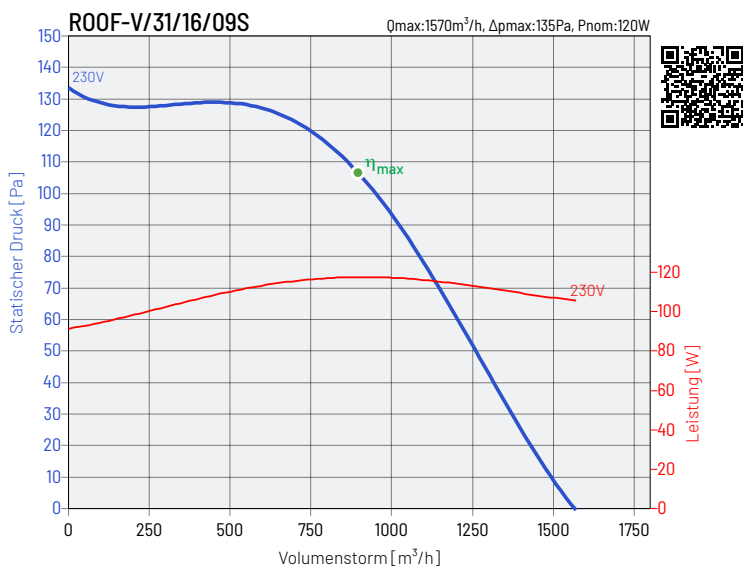
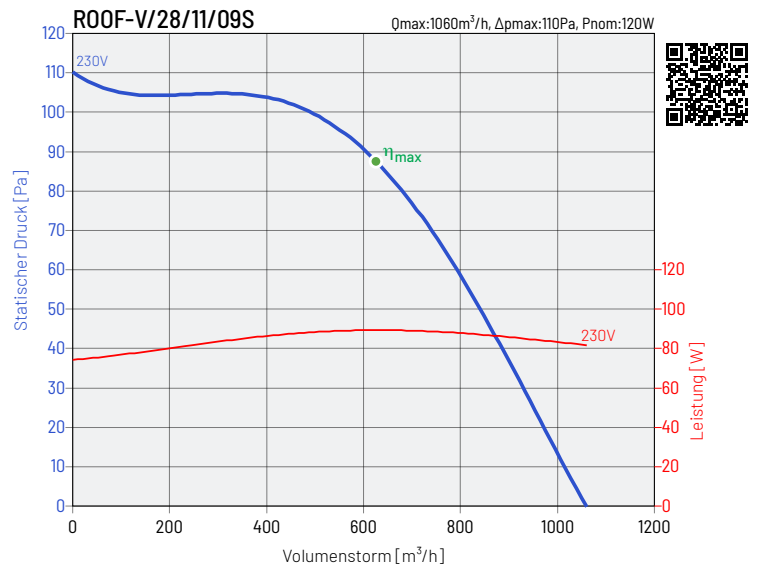
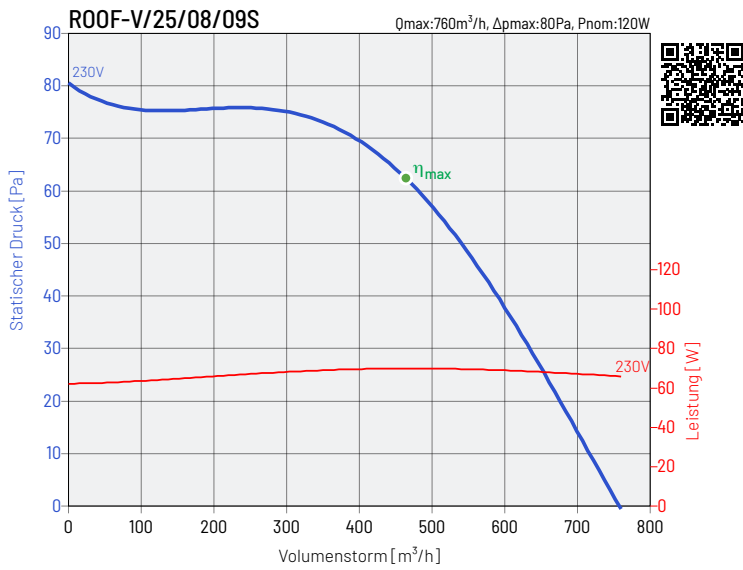


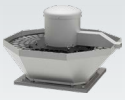
KENNLINIEN DER VENTILATOREN



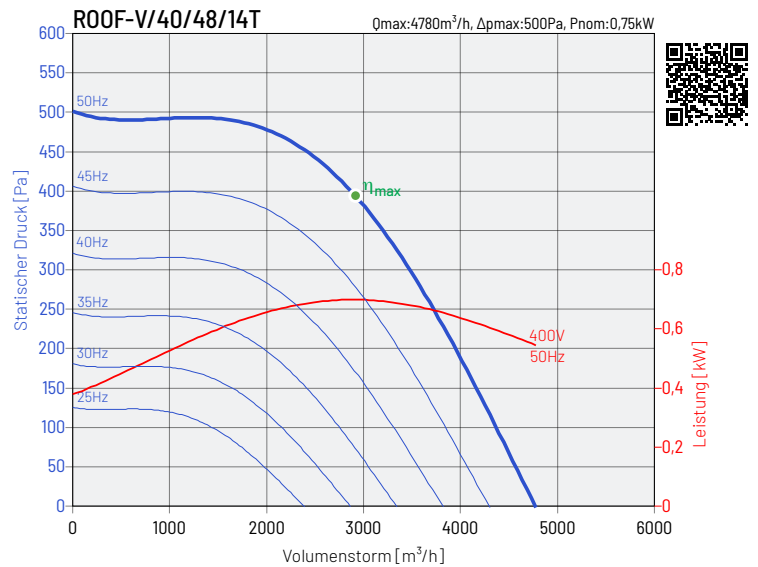
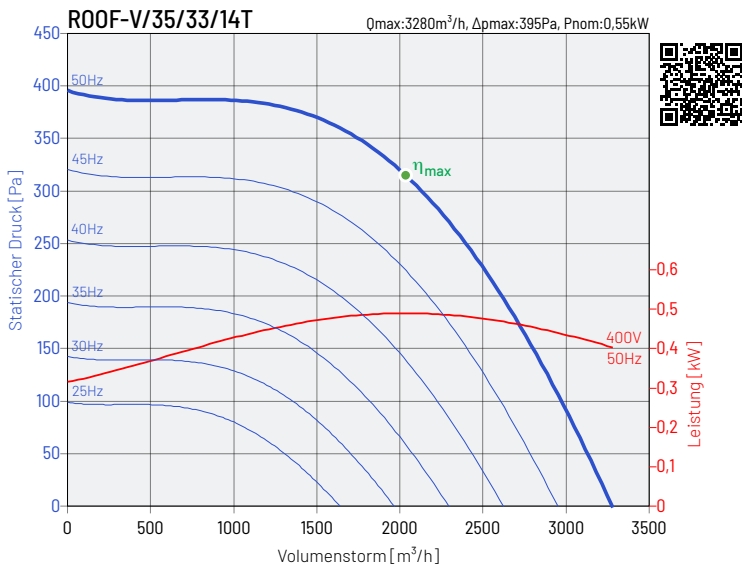
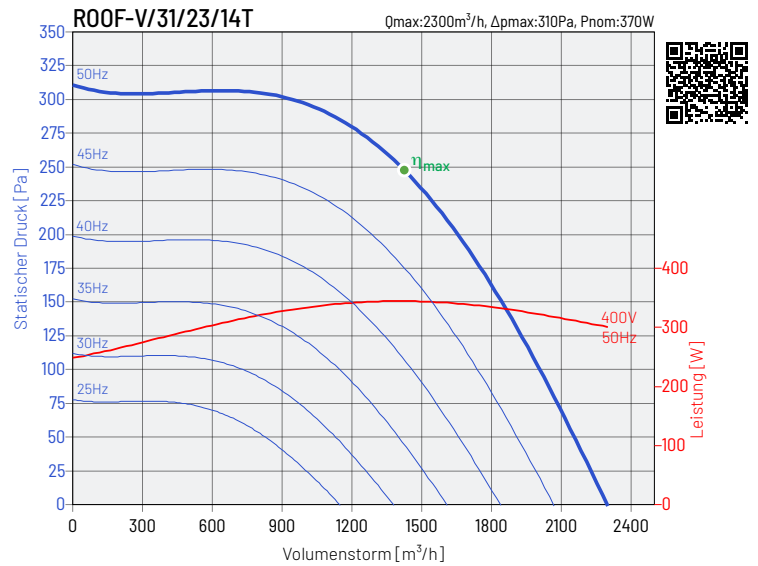
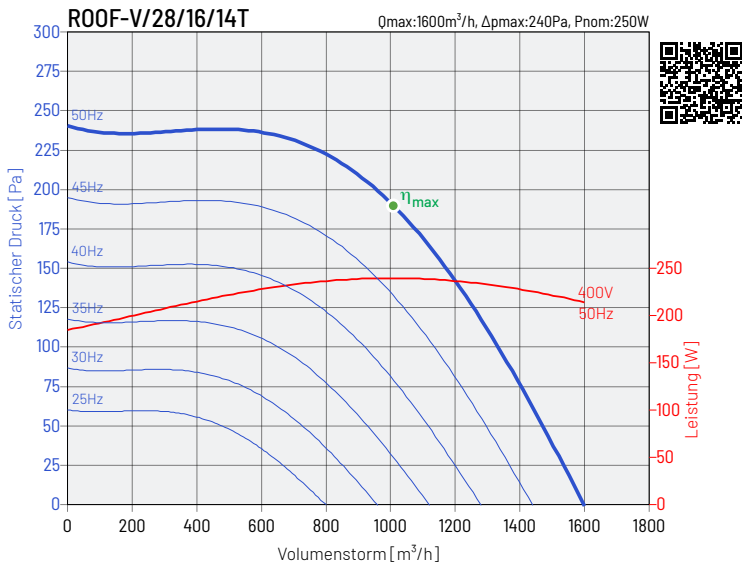
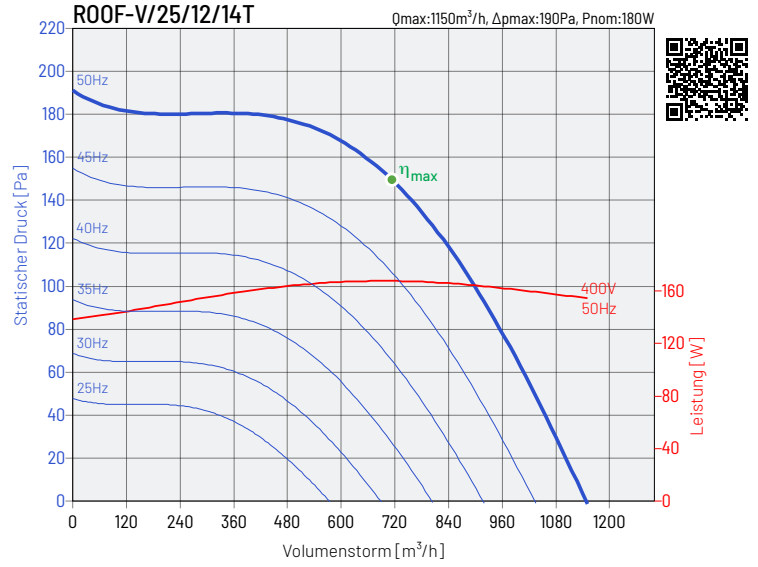
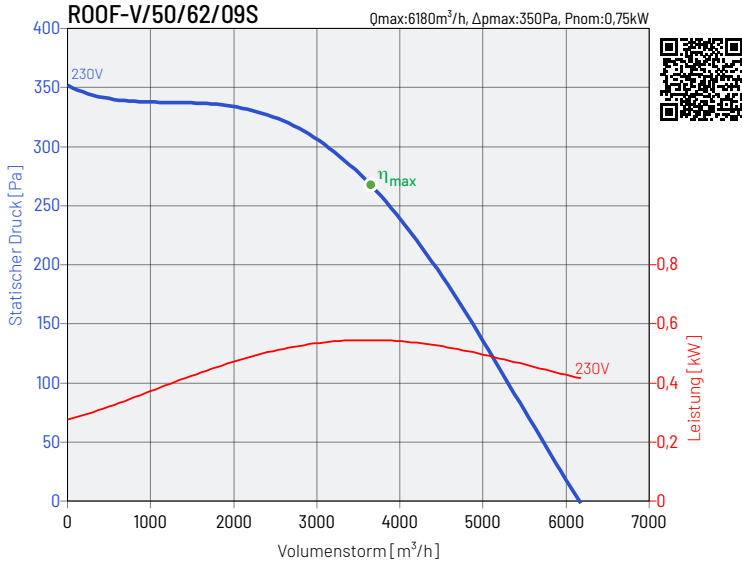


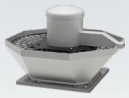
KENNLINIEN DER VENTILATOREN



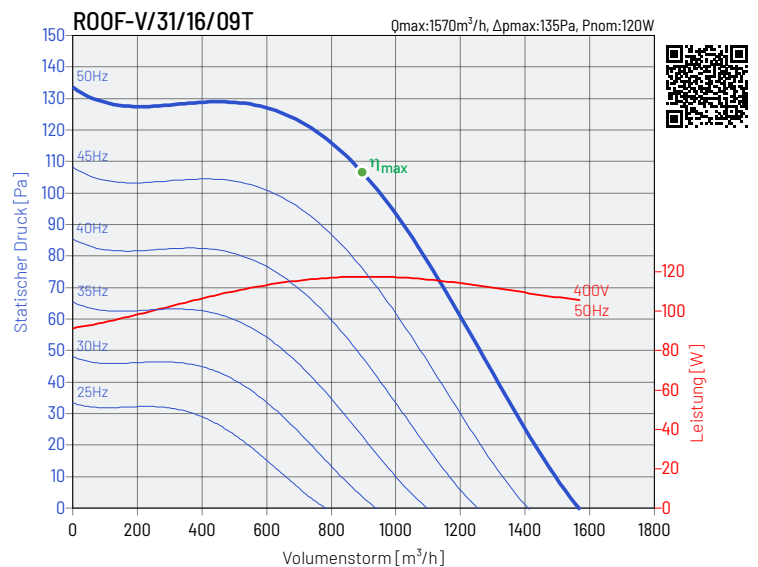
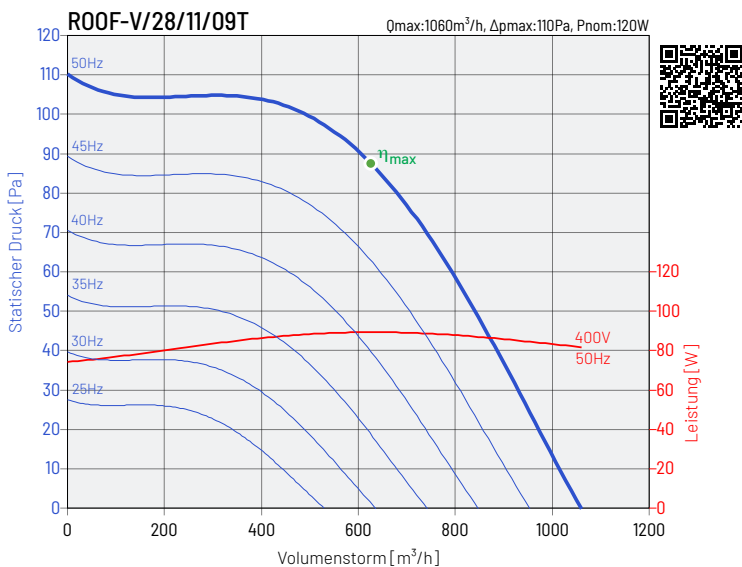
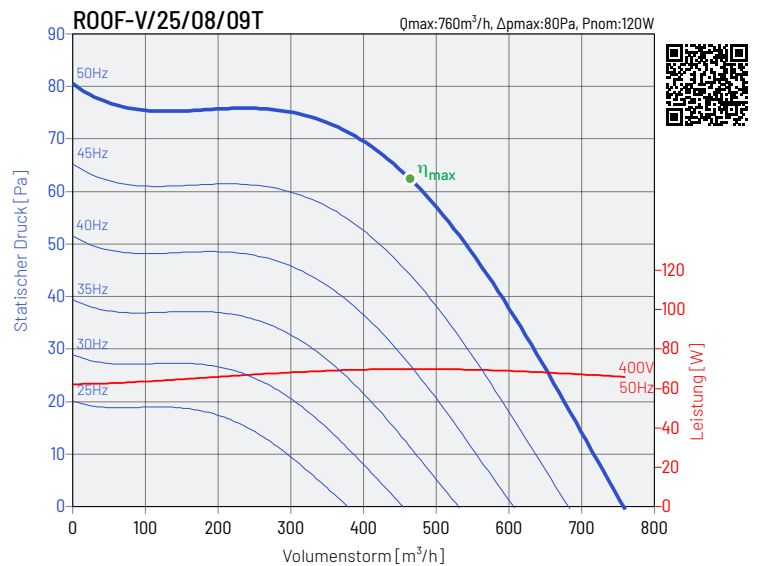
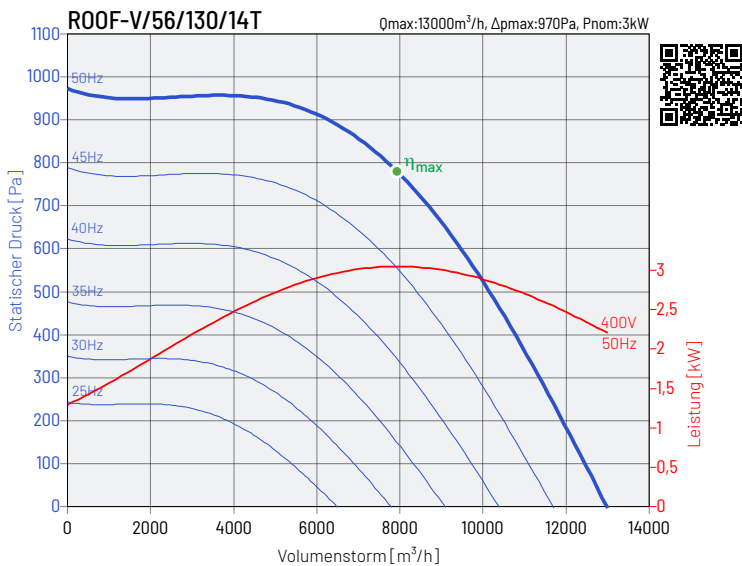
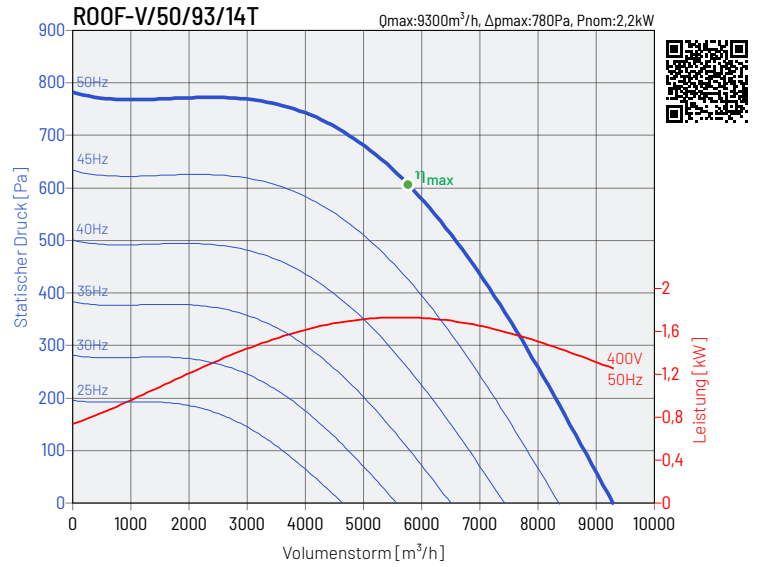
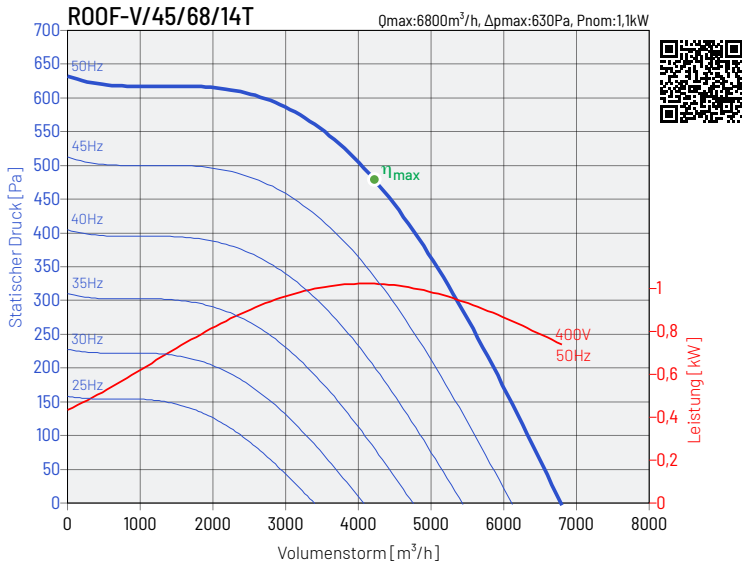


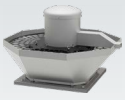
KENNLINIEN DER VENTILATOREN



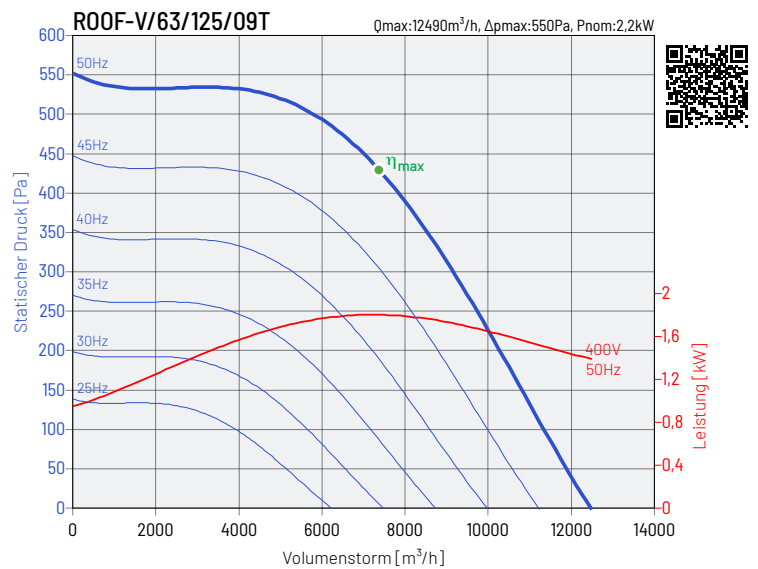
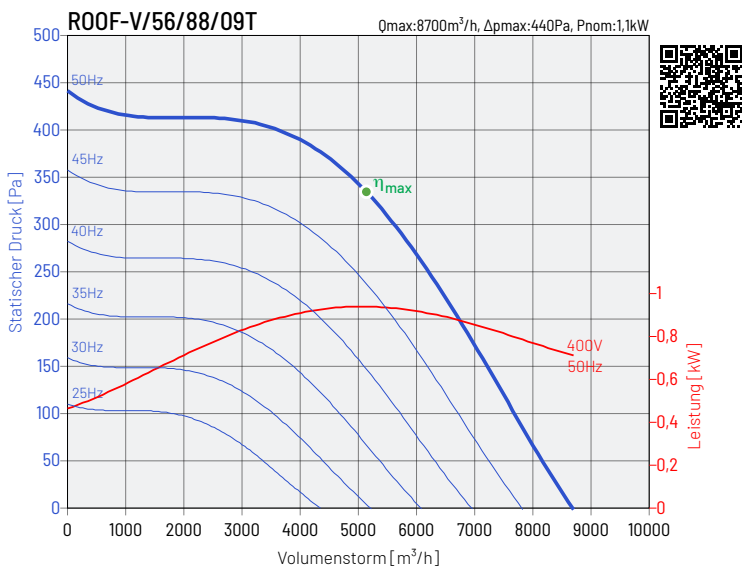
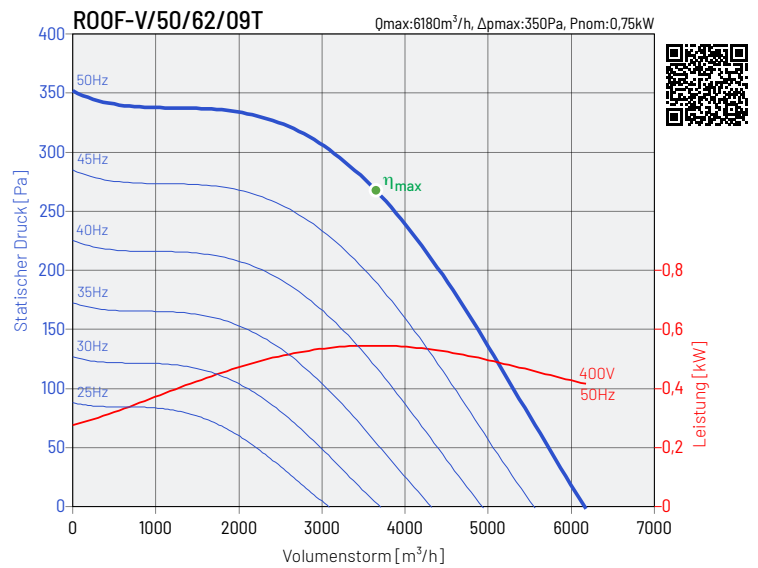
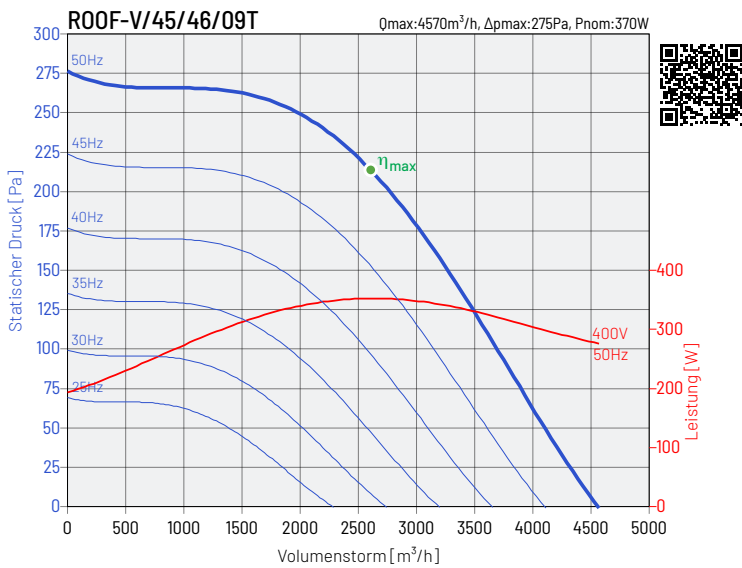
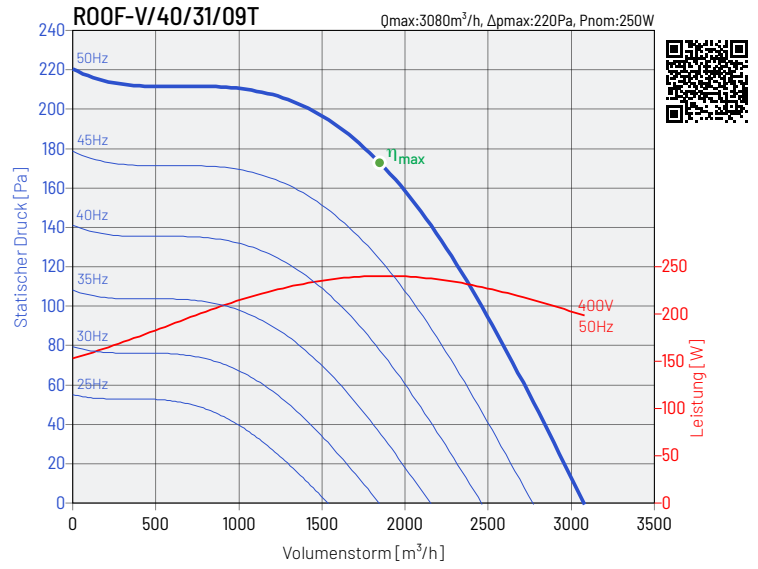
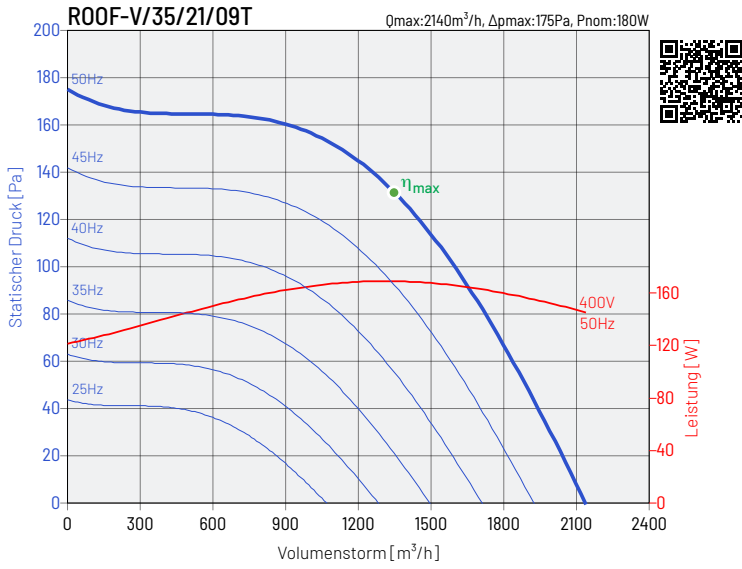


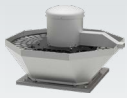
KENNLINIEN DER VENTILATOREN



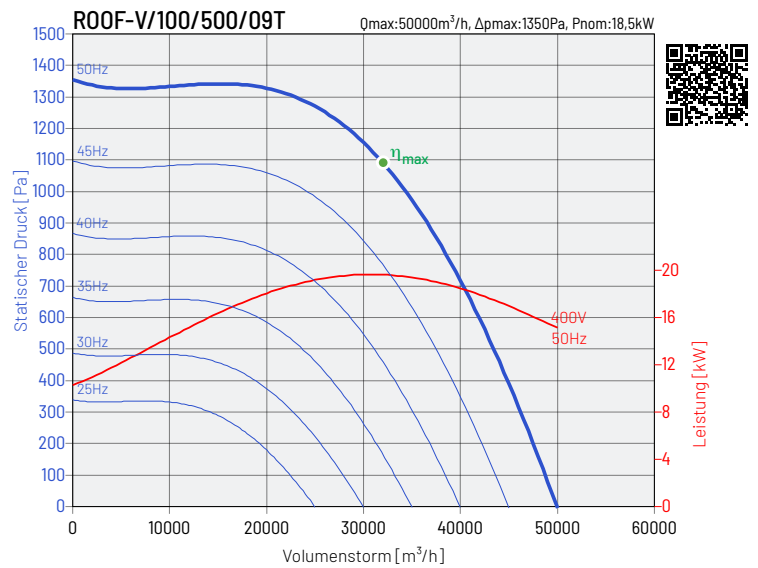
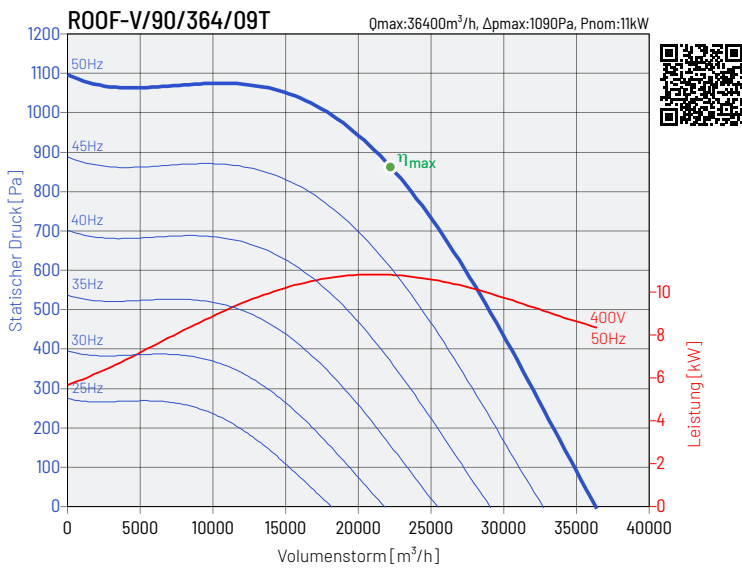
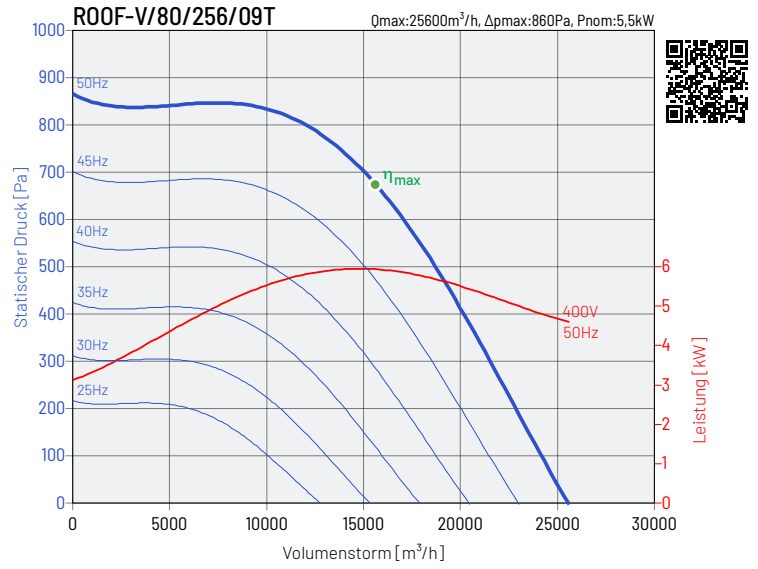
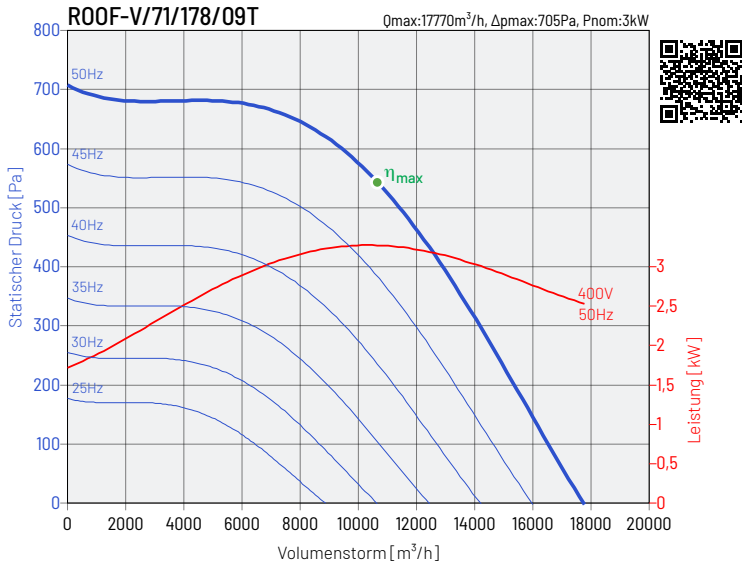


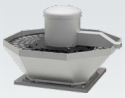
KENNLINIEN DER VENTILATOREN



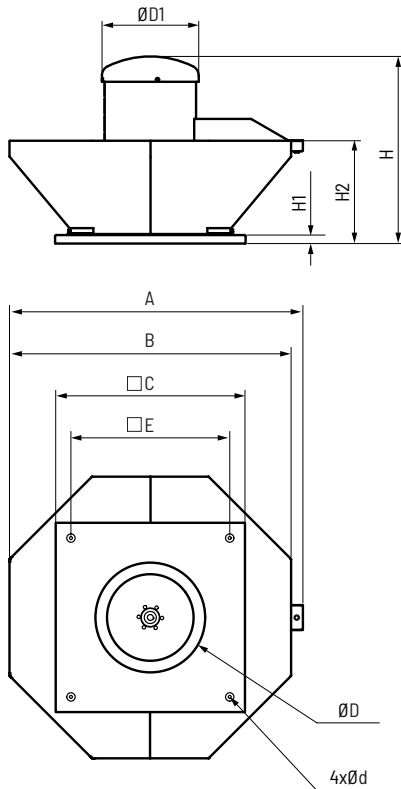


KENNLINIEN DER VENTILATOREN

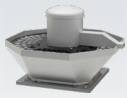




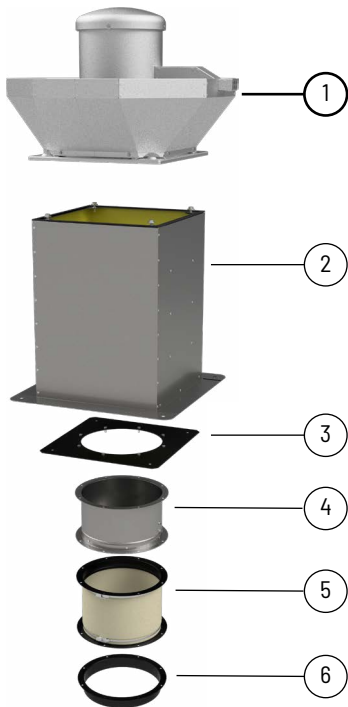
ABMESSUNGEN



Typ	A mm	B mm	C mm	Ød mm	ØD mm	ØD1 mm	E mm	H mm	H1 mm	H2 mm
ROOF-V/25	589	535	435	12	200	318	330	442	15	246
ROOF-V/28	589	535	435	12	225	318	330	442	15	246
ROOF-V/31	723	668	435	12	250	318	330	477	15	261
ROOF-V/35	811	755	560	12	280	355	450	569	15	298
ROOF-V/40	904	848	560	12	315	355	450	586	15	298
ROOF-V/45	936	880	630	12	355	457	535	631	15	356
ROOF-V/50	1104	1048	710	12	400	457	590	801	17	393
ROOF-V/56	1234	1178	710	12	450	457	590	841	17	433
ROOF-V/63	1386	1330	900	14	500	457	750	884	40	484
ROOF-V/71	1556	1500	900	14	560	550	750	1044	40	543
ROOF-V/80	1736	1680	1100	14	630	550	840	1104	40	585
ROOF-V/90	1926	1870	1250	14	710	765	1000	1195	40	640
ROOF-V/100	2148	2094	1250	14	800	765	1000	1417	40	725



MONTAGEZUBEHÖR



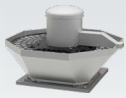
Typ	Dachgestell RSS	Dachgestell RS	Dachgestell RS-I	Dachgestell RSA	Dachgestell RSA-I
ROOF-V/25	RSS 435	RS 435	RS-I 435	RSA 435	RSA-I 435
ROOF-V/28	RSS 435	RS 435	RS-I 435	RSA 435	RSA-I 435
ROOF-V/31	RSS 435	RS 435	RS-I 435	RSA 435	RSA-I 435
ROOF-V/35	RSS 560	RS 560	RS-I 560	RSA 560	RSA-I 560
ROOF-V/40	RSS 560	RS 560	RS-I 560	RSA 560	RSA-I 560
ROOF-V/45	RSS 630	RS 630	RS-I 630	RSA 630	RSA-I 630
ROOF-V/50	RSS 710	RS 710	RS-I 710	RSA 710	RSA-I 710
ROOF-V/56	RSS 710	RS 710	RS-I 710	RSA 710	RSA-I 710
ROOF-V/63	RSS 905	RS 905	RS-I 905	RSA 905	RSA-I 905
ROOF-V/71	RSS 905	RS 905	RS-I 905	RSA 905	RSA-I 905
ROOF-V/80	RSS 1100	RS 1100	RS-I 1100	RSA 1100	RSA-I 1100
ROOF-V/90	-	RS 1250	RS-I 1250	RSA 1250	RSA-I 1250
ROOF-V/100	-	RS 1250	RS-I 1250	RSA 1250	RSA-I 1250



Typ	Verbinder P	Luftrückschlagklappe KZD SE	Flexibler Verbinder ZDPO	Verbinder K
ROOF-V/25	P 435	KZD SE 435	ZDPO 435	K 435
ROOF-V/28	P 435	KZD SE 435	ZDPO 435	K 435
ROOF-V/31	P 435	KZD SE 435	ZDPO 435	K 435
ROOF-V/35	P 560	KZD SE 560	ZDPO 560	K 560
ROOF-V/40	P 560	KZD SE 560	ZDPO 560	K 560
ROOF-V/45	P 630	KZD SE 630	ZDPO 630	K 630
ROOF-V/50	P 710	KZD SE 710	ZDPO 710	K 710
ROOF-V/56	P 710	KZD SE 710	ZDPO 710	K 710
ROOF-V/63	P 905	KZD SE 905	ZDPO 905	K 905
ROOF-V/71	P 905	KZD SE 905	ZDPO 905	K 905
ROOF-V/80	P 1100	KZD SE 1100	ZDPO 1100	K 1100
ROOF-V/90	P 1250	KZD SE 1250	ZDPO 1250	K 1250
ROOF-V/100	P 1250	KZD SE 1250	ZDPO 1250	K 1250

Artikelnummer

43526520	RSS 435	43526020	RS 435	43526120	RSA 435	43526310	P 435	43527410	ZDPO 435	43526410	K 435
43526530	RSS 560	43526030	RS 560	43526130	RSA 560	43526320	P 560	43527420	ZDPO 560	43526420	K 560
43526540	RSS 630	43526040	RS 630	43526140	RSA 630	43526330	P 630	43527430	ZDPO 630	43526430	K 630
43526550	RSS 710	43526050	RS 710	43526150	RSA 710	43526340	P 710	43527440	ZDPO 710	43526440	K 710
43526560	RSS 905	43526060	RS 905	43526160	RSA 905	43526350	P 905	43527450	ZDPO 905	43526450	K 905
43526570	RSS 1100	43526070	RS 1100	43526170	RSA 1100	43526360	P 1100	43527460	ZDPO 1100	43526460	K 1100
43526580	RSS 1250	43526080	RS 1250	43526180	RSA 1250	43526370	P 1250	43527470	ZDPO 1250	43526470	K 1250
		43526721	RS-I 435	43526821	RSA-I 435	43527312	KZD SE 435				
		43526731	RS-I 560	43526831	RSA-I 560	43527322	KZD SE 560				
		43526741	RS-I 630	43526841	RSA-I 630	43527332	KZD SE 630				
		43526751	RS-I 710	43526851	RSA-I 710	43527342	KZD SE 710				
		43526761	RS-I 905	43526861	RSA-I 905	43527352	KZD SE 905				
		43526771	RS-I 1100	43526871	RSA-I 1100	43527362	KZD SE 1100				
		43526781	RS-I 1250	43526881	RSA-I 1250	43527372	KZD SE 1250				

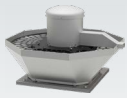


ELEKTRISCHES ZUBEHÖR



Typ	Wand Thermosta	Leitung Thermostat	Sensor Temperatur	Luftqualitäts Sensor	Hygrostat	Thyristor Regler
	TS*	TK-21	für TK-21	SQA	HIG-2	REB
ROOF-V/25/12/14S	TS	TK-21	Sensor TK-21	SQA	HIG-2	REB-5
ROOF-V/28/16/14S	TS	TK-21	Sensor TK-21	SQA + DILM7-10	HIG-2 + DILM7-10	REB-5
ROOF-V/31/23/14S	TS + DILM7-10	TK-21	Sensor TK-21	SQA + DILM7-10	HIG-2 + DILM7-10	REB-5
ROOF-V/35/33/14S	TS + DILM7-10	TK-21 + DILM7-10	Sensor TK-21	SQA + DILM7-10	HIG-2 + DILM7-10	REB-10
ROOF-V/40/48/14S	TS + DILM7-10	TK-21 + DILM7-10	Sensor TK-21	SQA + DILM7-10	HIG-2 + DILM7-10	REB-10
ROOF-V/45/68/14S	TS + DILM7-10	TK-21 + DILM7-10	Sensor TK-21	SQA + DILM7-10	HIG-2 + DILM7-10	REB-10
ROOF-V/25/08/09S	TS	TK-21	Sensor TK-21	SQA	HIG-2	REB-5
ROOF-V/28/11/09S	TS	TK-21	Sensor TK-21	SQA	HIG-2	REB-5
ROOF-V/31/16/09S	TS	TK-21	Sensor TK-21	SQA	HIG-2	REB-5
ROOF-V/35/21/09S	TS	TK-21	Sensor TK-21	SQA	HIG-2	REB-5
ROOF-V/40/31/09S	TS	TK-21	Sensor TK-21	SQA + DILM7-10	HIG-2 + DILM7-10	REB-5
ROOF-V/45/46/09S	TS + DILM7-10	TK-21	Sensor TK-21	SQA + DILM7-10	HIG-2 + DILM7-10	REB-10
ROOF-V/50/62/09S	TS + DILM7-10	TK-21 + DILM7-10	Sensor TK-21	SQA + DILM7-10	HIG-2 + DILM7-10	REB-10
ROOF-V/25/12/14T	TS + DILM7-10	TK-21 + DILM7-10	Sensor TK-21	SQA + DILM7-10	HIG-2 + DILM7-10	-
ROOF-V/28/16/14T	TS + DILM7-10	TK-21 + DILM7-10	Sensor TK-21	SQA + DILM7-10	HIG-2 + DILM7-10	-
ROOF-V/31/23/14T	TS + DILM7-10	TK-21 + DILM7-10	Sensor TK-21	SQA + DILM7-10	HIG-2 + DILM7-10	-
ROOF-V/35/33/14T	TS + DILM7-10	TK-21 + DILM7-10	Sensor TK-21	SQA + DILM7-10	HIG-2 + DILM7-10	-
ROOF-V/40/48/14T	TS + DILM7-10	TK-21 + DILM7-10	Sensor TK-21	SQA + DILM7-10	HIG-2 + DILM7-10	-
ROOF-V/45/68/14T	TS + DILM7-10	TK-21 + DILM7-10	Sensor TK-21	SQA + DILM7-10	HIG-2 + DILM7-10	-
ROOF-V/50/93/14T	TS + DILM7-10	TK-21 + DILM7-10	Sensor TK-21	SQA + DILM7-10	HIG-2 + DILM7-10	-
ROOF-V/56/130/14T	TS + DILM7-10	TK-21 + DILM7-10	Sensor TK-21	SQA + DILM7-10	HIG-2 + DILM7-10	-
ROOF-V/25/08/09T	TS + DILM7-10	TK-21 + DILM7-10	Sensor TK-21	SQA + DILM7-10	HIG-2 + DILM7-10	-
ROOF-V/28/11/09T	TS + DILM7-10	TK-21 + DILM7-10	Sensor TK-21	SQA + DILM7-10	HIG-2 + DILM7-10	-
ROOF-V/31/16/09T	TS + DILM7-10	TK-21 + DILM7-10	Sensor TK-21	SQA + DILM7-10	HIG-2 + DILM7-10	-
ROOF-V/35/21/09T	TS + DILM7-10	TK-21 + DILM7-10	Sensor TK-21	SQA + DILM7-10	HIG-2 + DILM7-10	-
ROOF-V/40/31/09T	TS + DILM7-10	TK-21 + DILM7-10	Sensor TK-21	SQA + DILM7-10	HIG-2 + DILM7-10	-
ROOF-V/45/46/09T	TS + DILM7-10	TK-21 + DILM7-10	Sensor TK-21	SQA + DILM7-10	HIG-2 + DILM7-10	-
ROOF-V/50/62/09T	TS + DILM7-10	TK-21 + DILM7-10	Sensor TK-21	SQA + DILM7-10	HIG-2 + DILM7-10	-
ROOF-V/56/88/09T	TS + DILM7-10	TK-21 + DILM7-10	Sensor TK-21	SQA + DILM7-10	HIG-2 + DILM7-10	-
ROOF-V/63/125/09T	TS + DILM7-10	TK-21 + DILM7-10	Sensor TK-21	SQA + DILM7-10	HIG-2 + DILM7-10	-
ROOF-V/71/178/09T	TS + DILM7-10	TK-21 + DILM7-10	Sensor TK-21	SQA + DILM7-10	HIG-2 + DILM7-10	-
ROOF-V/80/256/09T	TS + DILM15-10	TK-21 + DILM15-10	Sensor TK-21	SQA + DILM15-10	HIG-2 + DILM15-10	-
ROOF-V/90/364/09T	TS + DILM25-10	TK-21 + DILM25-10	Sensor TK-21	SQA + DILM25-10	HIG-2 + DILM25-10	-
ROOF-V/100/500/09T	TS + DILM40-10	TK-21 + DILM40-10	Sensor TK-21	SQA + DILM40-10	HIG-2 + DILM40-10	-

* Einphasenmotoren verwenden alle Spuren im Schütz



ELEKTRISCHES ZUBEHÖR



Typ	11-Stufen-Thyristor Regler	Transformator Regler		2-Stufen-Transformator Regler	Wandler
	IRF	RMB	RVS	SC2A	L
ROOF-V/25/12/14S	IRF-900	RMB 3,5	RVS 3	SC2A1-25L25	-
ROOF-V/28/16/14S	IRF-900	RMB 3,5	RVS 3	SC2A1-25L25	-
ROOF-V/31/23/14S	IRF-900	RMB 3,5	RVS 5	SC2A1-35L25	-
ROOF-V/35/33/14S	IRF-900	RMB 8	RVS 5	SC2A1-50L25	-
ROOF-V/40/48/14S	IRF-900	RMB 8	RVS 5	SC2A1-50L25	-
ROOF-V/45/68/14S	-	RMB 10	RVS 10	SC2A1-110L25	-
ROOF-V/25/08/09S	IRF-900	RMB 3,5	RVS 3	SC2A1-25L25	-
ROOF-V/28/11/09S	IRF-900	RMB 3,5	RVS 3	SC2A1-25L25	-
ROOF-V/31/16/09S	IRF-900	RMB 3,5	RVS 3	SC2A1-25L25	-
ROOF-V/35/21/09S	IRF-900	RMB 3,5	RVS 3	SC2A1-25L25	-
ROOF-V/40/31/09S	IRF-900	RMB 3,5	RVS 3	SC2A1-25L25	-
ROOF-V/45/46/09S	IRF-900	RMB 3,5	RVS 5	SC2A1-50L25	-
ROOF-V/50/62/09S	IRF-900	RMB 8	RVS 7	SC2A1-75L25	-
ROOF-V/25/12/14T	-	-	-	SC2A4-15L55	L 0,4kW
ROOF-V/28/16/14T	-	-	-	SC2A4-15L55	L 0,4kW
ROOF-V/31/23/14T	-	-	-	SC2A4-15L55	L 0,4kW
ROOF-V/35/33/14T	-	-	-	SC2A4-25L55	L 0,75kW
ROOF-V/40/48/14T	-	-	-	SC2A4-25L55	L 0,75kW
ROOF-V/45/68/14T	-	-	-	SC2A4-40L55	L 1,5kW
ROOF-V/50/93/14T	-	-	-	SC2A4-60L55	L 2,2kW
ROOF-V/56/130/14T	-	-	-	SC2A4-80L55	L 4,0kW
ROOF-V/25/08/09T	-	-	-	SC2A4-15L55	L 0,4kW
ROOF-V/28/11/09T	-	-	-	SC2A4-15L55	L 0,4kW
ROOF-V/31/16/09T	-	-	-	SC2A4-15L55	L 0,4kW
ROOF-V/35/21/09T	-	-	-	SC2A4-15L55	L 0,4kW
ROOF-V/40/31/09T	-	-	-	SC2A4-15L55	L 0,4kW
ROOF-V/45/46/09T	-	-	-	SC2A4-15L55	L 0,4kW
ROOF-V/50/62/09T	-	-	-	SC2A4-25L55	L 0,75kW
ROOF-V/56/88/09T	-	-	-	SC2A4-40L55	L 1,5kW
ROOF-V/63/125/09T	-	-	-	SC2A4-40L55	L 2,2kW
ROOF-V/71/178/09T	-	-	-	SC2A4-80L55	L 4,0kW
ROOF-V/80/256/09T	-	-	-	-	L 5,5kW
ROOF-V/90/364/09T	-	-	-	-	L 11,0kW
ROOF-V/100/500/09T	-	-	-	-	L 18,5kW

Artikelnummer

91040997 DILM7-10	40025345 TS	40025051 REB-5	40025234 RVS 3	40025253 SC2A1-25L25	40016302 L 0,4kW
91040666-42 DILM15-10	40025320 TK-21	40025055 REB-10	40025235 RVS 5	40025255 SC2A1-35L25	40016312 L 0,75kW
91040905 DILM25-10	40025140 SQA	40015154 IRF-900	40025236 RVS 7	40025257 SC2A1-50L25	40016322 L 1,5kW
91040666 DILM40-10	40025150 HIG-2	40025070 RMB 3,5	40025237 RVS 10	40025259 SC2A1-75L25	40016332 L 2,2kW
		40025080 RMB 8		40025251 SC2A1-110L25	40016352 L 4,0kW
		40025090 RMB 10		40025270 SC2A4-15L55	40016362 L 5,5kW
				40025272 SC2A4-25L55	40016383 L 11,0kW
				40025274 SC2A4-40L55	40016412 L 18,5kW
				40025276 SC2A4-60L55	
				40025278 SC2A4-80L55	