



APPLICATION

CAB-PLUS is characterized by low height, which is recommended for installation in suspended ceilings. Ideal for ventilation of public buildings, libraries, conference rooms, offices, restaurants, classrooms, audio studios, etc.

CONSTRUCTION

Fans with soundproof enclosure type CAB-PLUS area series of two silenced single-sided centrifugal fans designed for installation in indoor and outdoor installations in a vertical or horizontal position.

The fan casing is made of galvanized sheet steel. The rounded inlet and outlet nozzles are fitted with rubber gaskets.

MOTOR

The fans are equipped with asynchronous, single-phase 220-240V, 50/60Hz and have an IP44 protection rating with external rotor. Insulation class B.

CAB-PLUS have two-speed motors. Motors are designed for voltage-controlled speed control.

Electrical connection diagram fig.9 p.663.



WWW



DTR



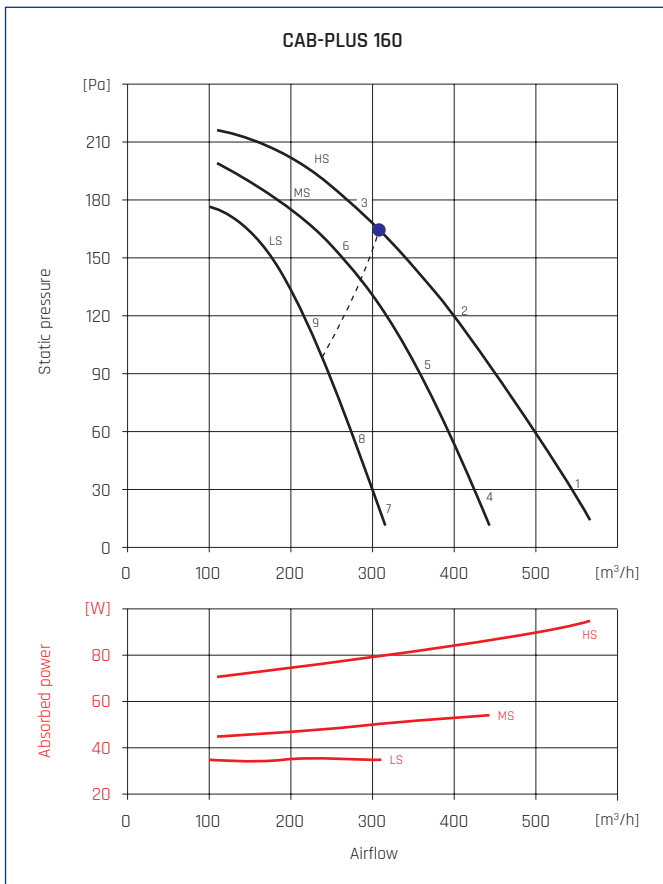
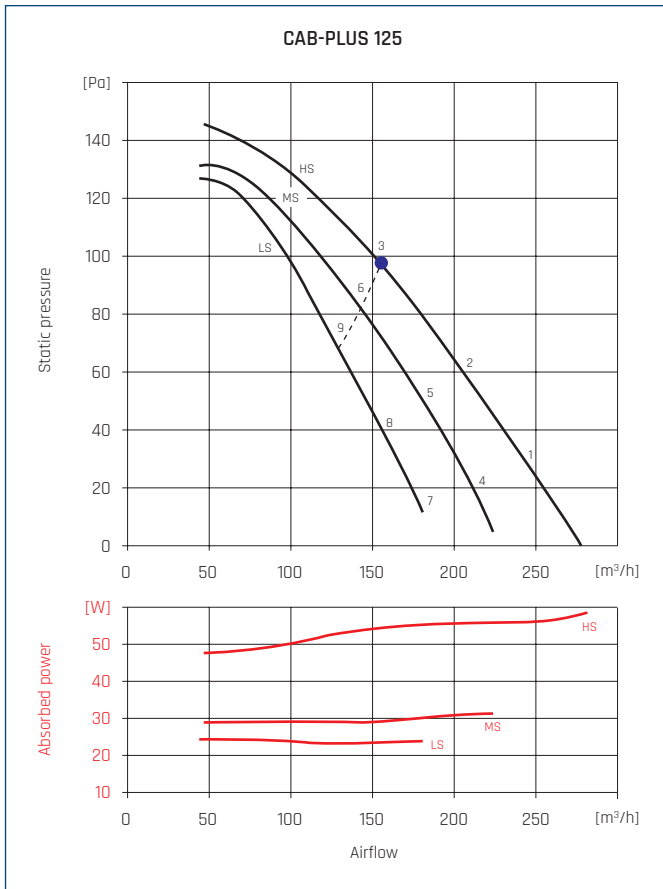
CE

TECHNICAL CHARACTERISTICS

Type	voltage	speed	maximum absorbed power	maximum absorbed current	airflow at free discharge	operating temp. min max		sound pressure level*	weight	regulator	ErP	article number
	[V]	[obr/min]	[W]	[A]	[m³/h]	[°C]	[dB(A)]	[kg]				
CAB-PLUS 125	HS	910	57	0,25	280	-20	+40	21	11,6	TLR 15 DS RVS 1,5 INTER 4P	2016	41020470
	MS	723	31	0,19	220			19				
	LS	585	24	0,18	180			17				
CAB-PLUS 160	HS	1317	97	0,42	600	-20	+40	27	15,9	TLR 15 DS RVS 1,5 INTER 4P	2016	41020480
	MS	1010	53	0,36	440			25				
	LS	714	35	0,31	310			20				
CAB-PLUS 250	HS	1317	133	0,59	750	-20	+40	33	22,5	TLR 15 DS RVS 1,5 INTER 4P	2016	41020490
	MS	880	67	0,44	500			26				
	LS	639	47	0,35	370			22				
CAB-PLUS 315	HS	1200	326	1,46	920	-20	+40	37	26,8	TLR 25 DS RVS 1,5 INTER 4P	2016	41020494
	MS	962	251	1,39	720			34				
	LS	692	171	1,19	500			31				

* measured at a distance of 3m from the fan.

PERFORMANCE CURVES



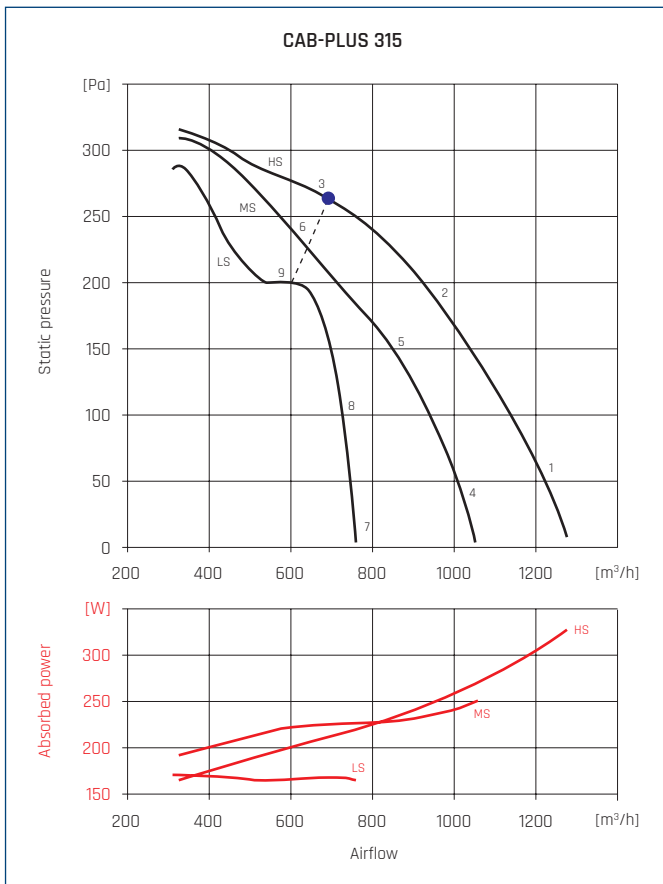
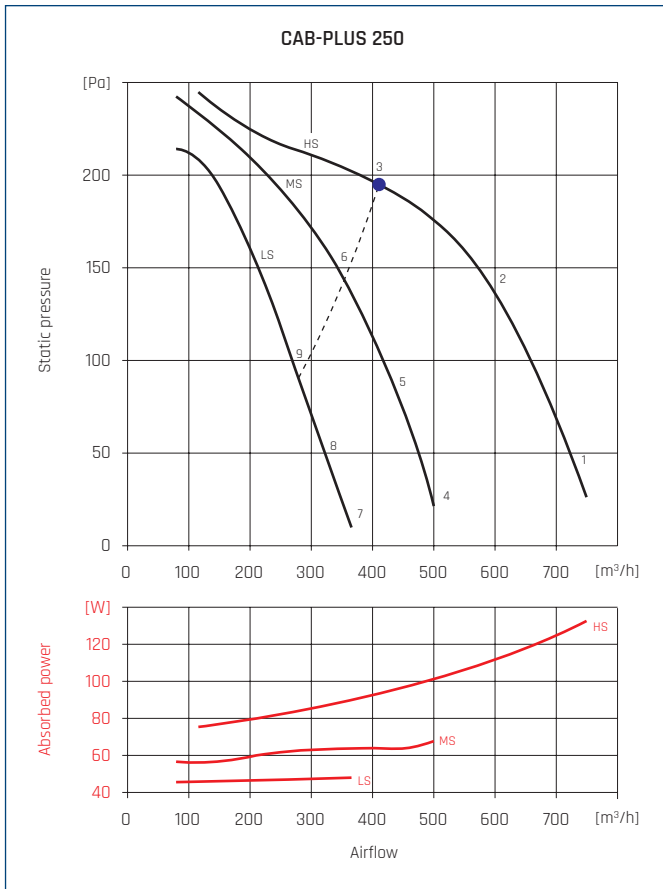
● - highest efficiency point.

ACOUSTIC CHARACTERISTICS

Hz/dB(A)		63	125	250	500	1000	2000	4000	8000	L _{WA}
1	Inlet	31	41	39	38	41	38	27	20	47
	Outlet	27	42	43	46	52	49	45	41	56
	Emitted	31	38	35	34	37	34	21	17	43
2	Inlet	29	39	39	38	39	35	27	20	46
	Outlet	25	41	42	46	52	49	45	39	56
	Emitted	29	36	35	34	35	31	21	17	42
3	Inlet	33	43	42	40	40	38	31	24	49
	Outlet	27	44	45	48	53	50	46	39	57
	Emitted	33	40	38	36	36	34	25	21	45
4	Inlet	26	36	34	33	36	33	22	15	42
	Outlet	22	37	38	41	47	44	40	36	51
	Emitted	26	33	30	29	32	29	16	12	38
5	Inlet	27	37	37	36	37	33	25	18	44
	Outlet	23	39	40	44	50	47	43	37	54
	Emitted	27	34	33	32	33	29	19	15	40
6	Inlet	32	42	41	39	39	37	30	23	47
	Outlet	26	43	44	47	52	49	45	38	56
	Emitted	32	39	37	35	35	33	24	20	44
7	Inlet	21	31	29	28	31	28	17	10	37
	Outlet	18	33	34	37	43	40	36	32	46
	Emitted	21	28	25	24	27	24	11	7	34
8	Inlet	25	35	35	34	35	31	23	16	41
	Outlet	21	37	38	42	48	45	41	35	51
	Emitted	25	32	31	30	31	27	17	13	38
9	Inlet	29	39	38	36	36	34	27	20	45
	Outlet	23	40	41	44	49	46	42	35	53
	Emitted	29	36	34	32	32	30	21	17	41

Hz/dB(A)		63	125	250	500	1000	2000	4000	8000	L _{WA}
1	Inlet	42	50	51	50	47	46	40	34	56
	Outlet	42	53	54	62	64	60	58	51	68
	Emitted	42	48	46	44	44	43	34	27	53
2	Inlet	35	46	44	44	43	41	36	29	51
	Outlet	35	47	46	57	59	56	53	45	63
	Emitted	35	44	39	38	40	38	30	22	48
3	Inlet	39	48	45	45	43	42	37	30	52
	Outlet	37	49	48	56	60	57	53	45	63
	Emitted	39	46	40	39	40	39	31	23	49
4	Inlet	36	44	45	44	41	40	34	28	50
	Outlet	36	47	48	56	58	54	52	45	62
	Emitted	36	42	40	38	38	37	28	21	47
5	Inlet	33	44	42	42	41	39	34	27	50
	Outlet	33	45	44	55	57	54	51	43	61
	Emitted	33	42	37	36	38	36	28	20	46
6	Inlet	37	46	43	43	41	40	35	28	51
	Outlet	35	47	46	54	58	55	51	43	62
	Emitted	37	44	38	37	38	37	29	21	48
7	Inlet	28	36	37	36	33	32	26	20	43
	Outlet	28	39	40	48	50	46	44	37	54
	Emitted	28	34	32	30	30	29	20	13	39
8	Inlet	28	39	37	37	36	34	29	22	44
	Outlet	28	40	39	50	52	49	46	38	56
	Emitted	28	37	32	31	33	31	23	15	41
9	Inlet	34	43	40	40	38	37	32	25	48
	Outlet	32	44	43	51	55	52	48	40	59
	Emitted	34	41	35	34	35	34	26	18	45

PERFORMANCE CURVES



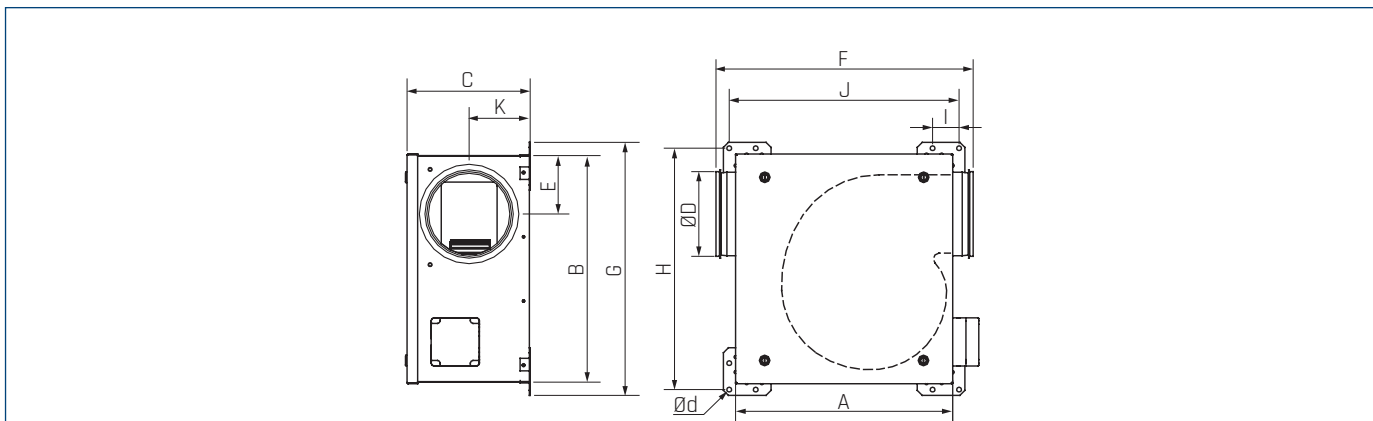
● - highest efficiency point.

ACOUSTIC CHARACTERISTICS

Hz/dB(A)		63	125	250	500	1000	2000	4000	8000	L _{WA}
1	Inlet	50	56	57	56	52	58	55	46	64
	Outlet	49	59	61	67	72	66	64	61	75
	Emitted	50	43	51	49	49	49	46	38	57
2	Inlet	45	50	53	54	49	52	50	40	60
	Outlet	42	52	55	63	67	62	59	55	70
	Emitted	45	37	47	47	46	43	41	32	54
3	Inlet	48	52	52	52	48	51	48	39	59
	Outlet	44	54	55	62	65	60	57	52	69
	Emitted	48	39	46	45	45	42	39	31	53
4	Inlet	41	47	48	47	43	49	46	37	55
	Outlet	41	51	53	59	64	58	56	53	67
	Emitted	41	34	42	40	40	40	37	29	49
5	Inlet	38	43	46	47	42	45	43	33	53
	Outlet	35	45	48	56	60	55	52	48	64
	Emitted	38	30	40	40	39	36	34	25	47
6	Inlet	45	49	49	49	45	48	45	36	56
	Outlet	41	51	52	59	62	57	54	49	66
	Emitted	45	36	43	42	42	39	36	28	50
7	Inlet	34	40	41	40	36	42	39	30	49
	Outlet	34	44	46	52	57	51	49	46	60
	Emitted	34	27	35	33	33	33	30	22	42
8	Inlet	34	39	42	43	38	41	39	29	49
	Outlet	31	41	44	52	56	51	48	44	59
	Emitted	34	26	36	36	35	32	30	21	42
9	Inlet	41	45	45	45	41	44	41	32	52
	Outlet	37	47	48	55	58	53	50	45	61
	Emitted	41	32	39	38	38	35	32	24	46

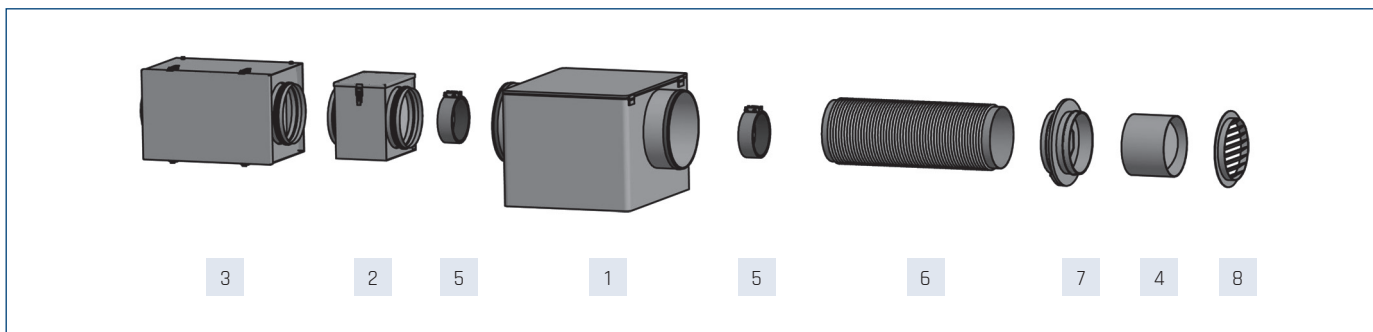
Hz/dB(A)		63	125	250	500	1000	2000	4000	8000	L _{WA}
1	Inlet	50	58	63	59	58	61	58	53	68
	Outlet	47	59	63	71	75	71	70	65	78
	Emitted	49	51	53	51	52	51	47	40	59
2	Inlet	49	56	61	56	57	59	55	50	66
	Outlet	45	56	61	68	73	69	68	62	77
	Emitted	48	49	51	48	51	49	44	37	58
3	Inlet	50	55	59	54	56	58	55	50	64
	Outlet	44	55	59	66	71	67	66	60	74
	Emitted	49	48	49	46	50	48	44	37	56
4	Inlet	45	53	58	54	53	56	53	48	63
	Outlet	42	54	58	66	70	66	65	60	74
	Emitted	44	46	48	46	47	46	42	35	55
5	Inlet	46	53	58	53	54	56	52	47	63
	Outlet	42	53	58	65	70	66	65	59	73
	Emitted	45	46	48	45	48	46	41	34	54
6	Inlet	49	54	58	53	55	57	54	49	63
	Outlet	43	54	58	65	70	66	65	59	73
	Emitted	48	47	48	45	49	47	43	36	55
7	Inlet	38	46	51	47	46	49	46	41	56
	Outlet	35	47	51	59	63	59	58	53	66
	Emitted	37	39	41	39	40	39	35	28	47
8	Inlet	43	50	55	50	51	53	49	44	59
	Outlet	39	50	55	62	67	63	62	56	70
	Emitted	42	43	45	42	45	43	38	31	51
9	Inlet	47	52	56	51	53	55	52	47	62
	Outlet	41	52	56	63	68	64	63	57	71
	Emitted	46	45	46	43	47	45	41	34	53

DIMENSIONS [mm]



Type	A	B	C	D	E	F	G	H	I	J	K	SSS
CAB-PLUS 125	255	345	330	125	96	126	411	358	373	395	50	9
CAB-PLUS 160	277	468	406	160	123	134	486	434	496	518	50	9
CAB-PLUS 250	382	494	494	250	160	185	607	516	518	540	50	9
CAB-PLUS 315	393	544	537	315	190	176	638	565	572	594	50	9

ACCESSORY ASSEMBLY



Type	1	2 channel filter DF	3 channel filter DF-K				
			cartridge filter to DF-K				
			EU3	EU5	EU7	EU9	
CAB-PLUS 125		40520620	40521715	40520800	40520805	40520810	40520820
CAB-PLUS 160		40520630	40521720	40520800	40520805	40520810	40520820
CAB-PLUS 250		40520650	40521730	40520800	40520805	40520810	40520820
CAB-PLUS 315		40520660	40521735	40520830	40520835	40520840	-

Type	1	4 backdraft shutter CAR-PL	5 antivibration connector ACOP PL	6 flexible silencer AKU COMP		7 throttle IRIS	8 vent KWO
				0,6m			
				0,6m	1,2m		
CAB-PLUS 125		40521020-01	40521815	40521520	40521620	19527125	40522530
CAB-PLUS 160		40521030-01	40521820	40521530	40521630	19527160	40522540
CAB-PLUS 250		40521050-01	40521830	40521550	40521650	19527250	40522560
CAB-PLUS 315		40521060-01	40521835	40521560	40521660	19527315	40522570

channel filter DF p. 243	channel filter DFK...+EU p. 244	backdraft shutt. CAR-PL p. 247	anti-vibr.con- nect. ACOP-PL p. 246	flexible silen- cer AKU-COMP p. 241	throttle IRIS p. 248	vent KWO p. 661	diffuser AKT/AKK p. 658	heater DH/DH-R p. 233

ELECTRICAL ACCESSORIES

Type	3-stage gear selector	wall thermostat	duct thermostat	air quality sensor	humidistat	thyristor controller		
	INTER 4P	TS	TK-1	SQA	HIG-2	REB N	REB NE	TLR
CAB-PLUS 125	40024990	40025345	40025330	40025140	40025150	40025010	40025020	40025025
CAB-PLUS 160	40024990	40025345	40025330	40025140	40025150	40025010	40025020	40025025
CAB-PLUS 250	40024990	40025345	40025330	40025140	40025150	40025010	40025020	40025045
CAB-PLUS 315	40024990	40025345	40025330	40025140	40025150	40025030	40025040	40025045

Type	11-speed thyristor regulator	2-adjustable 6-speed thyristor regulator	ERV	transformer regulator	transformer regulator 2-adjustable	
	IRF	RND-1		RMB	SC2	SC2A
CAB-PLUS 125	40015154	40025630	40025046	40025060	40025250	40025251
CAB-PLUS 160	40015154	40025630	40025046	40025060	40025250	40025251
CAB-PLUS 250	40015154	40025630	40025046	40025060	40025250	40025251
CAB-PLUS 315	40015154	40025630	40025046	40025070	40025250	40025251

									
thermostat TS p. 650	thermostat TK-1 p. 650	sensor SQA p. 645	humidistat HIG-2 p. 645	regulator REB p. 638	regulator TLR p. 639	regulator IRF p. 639	regulator RND-1 p. 641	regulator ERV p. 642	regulator RMB p. 640

	
regulator RVS p. 640	transformer regulator 2-adjustable p. 641

ERP CHARACTERISTICS

RVU*			
	Name	CAB-PLUS 125	CAB-PLUS 160
a	supplier name	VENTURE INDUSTRIES / SOLER&PALAU	VENTURE INDUSTRIES / SOLER&PALAU
b	article number	41020470	41020480
c	SEC average [kWh/m ² .a]	-10,2	-12
c	SEC cold	-26,6	-28,4
c	SEC warm	-0,8	-2,6
c	SEC class	E	E
d	device category	SWM (RVU)	SWM (RVU)
d	device type	JSW(UVU)	JSW(UVU)
e	type of drive	3 - speed	3 - speed
f	type of heat recovery system	not applicable	not applicable
g	thermal efficiency of heat recovery [%]	not applicable	not applicable
h	maximum flow rate [m ³ /h]	151	436
i	electric power input [W]	54,2	85,6
j	sound power level [dB(A)]	41	46
k	reference flow rate [m ³ /s]	0,03	0,09
l	reference pressure difference [Pa]	93	123
m	JPM/SPI [W/m ³ /h]	0,22	0,16
n	CRS/CTRL	1	1
o	maximum external leakage for BVU [%]	5	5
p	mixing rate	not applicable	not applicable
q	position of visual filter warning	not applicable	not applicable
r	instructions for installing supply grilles	not applicable	not applicable
s	internet address	www.ventur.eu / www.solerpalau.com	www.ventur.eu / www.solerpalau.com
t	airflow sensitivity to pressure variation	not applicable	not applicable
u	indoor/outdoor air tightness [m ³ /h]	not applicable	not applicable
v	annual electricity consumption - average climate [kWh/a]	280	205
v	annual electricity consumption - warm climate [kWh/a]	280	205
v	annual electricity consumption - cold climate [kWh/a]	280	205
w	annual heating saved - cold climate [kWh/a]		
w	annual heating saved - average climate [kWh/a]		
w	annual heating saved - warm climate [kWh/a]		
	MISC	1,1	1,1
	x-value	1,2	1,2
NRVU**			
	Name	CAB-PLUS 250	CAB-PLUS 315
a	supplier name	VENTURE INDUSTRIES / SOLER&PALAU	VENTURE INDUSTRIES / SOLER&PALAU
b	article number	41020490	41020494
c	device category	NRVU	NRVU
c	device type	UVU	UVU
d	type of drive	VSD	VSD
e	type of heat recovery system	not applicable	not applicable
f	thermal efficiency of heat recovery [%]	not applicable	not applicable
g	reference flow rate in NRVU [m ³ /s]	0,12	0,19
h	effective electric power input [kW]	0,09	0,21
i	SFP _{int} [W/(m ³ /s)]	not applicable	not applicable
j	face velocity [m/s]	1,2	1,8
k	Δps, ext [Pa]	196	261
l	Δps, int [Pa]	not applicable	not applicable
m	Δps, add [Pa]	not applicable	not applicable
n	static efficiency of fans [%]	33,2	39,5
o	maximum external leakage rate [%]	5	5
p	maximum internal leakage rate [%]	not applicable	not applicable
q	energy performance	not applicable	not applicable
r	visual filter warning	not applicable	not applicable
s	L _{WA} [dB(A)]	53	56
	internet address	www.ventur.eu / www.solerpalau.com	www.ventur.eu / www.solerpalau.com

* RVU - "residential ventilation unit" - according to COMMISSION REGULATION (EU) No 1253/2014.

** NRVU - "non-residential ventilation unit" - according to COMMISSION REGULATION (EU) No 1254/2014