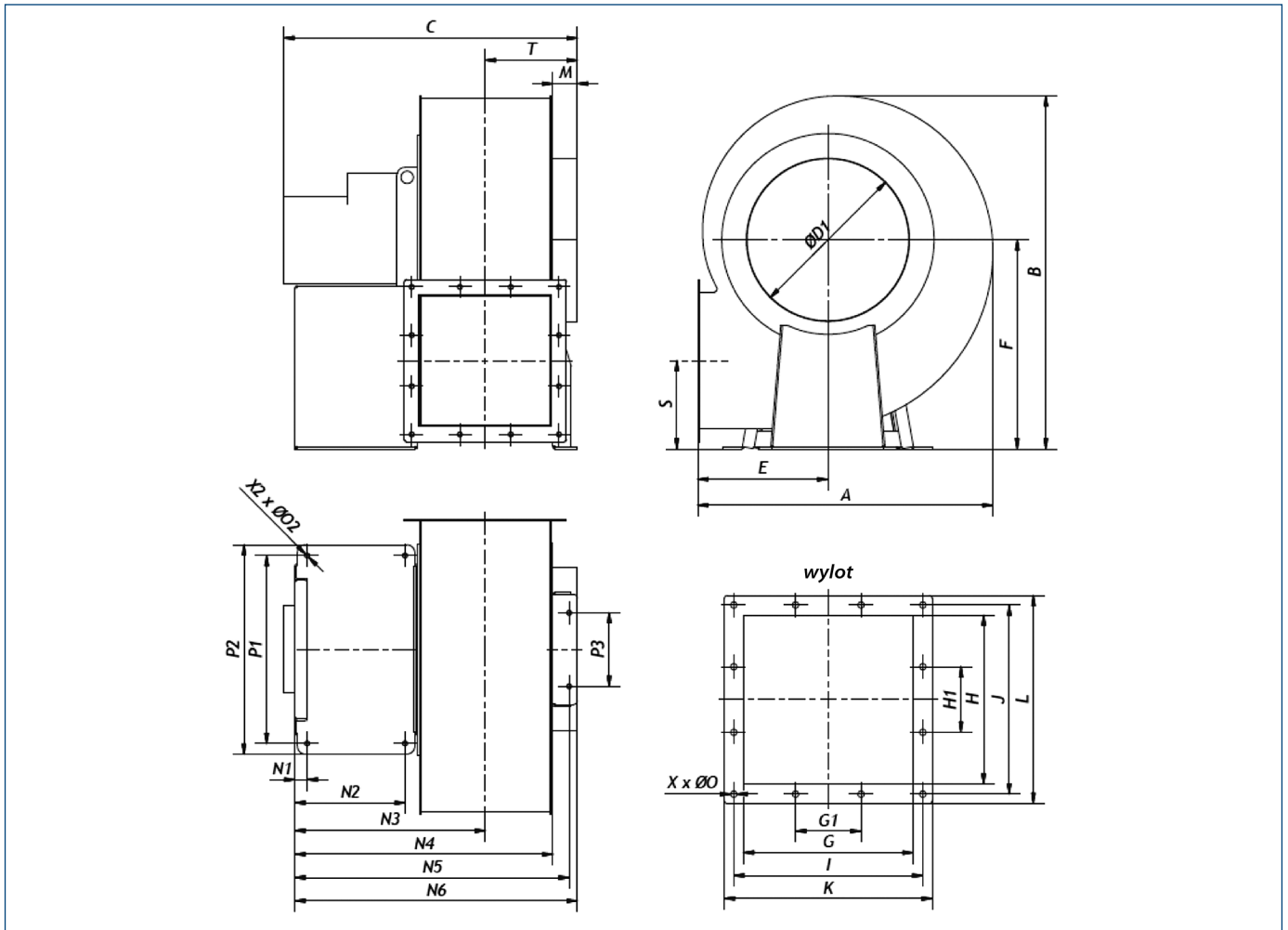


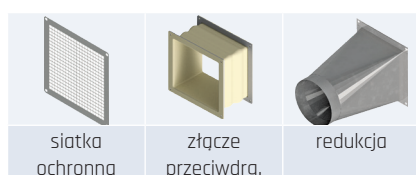
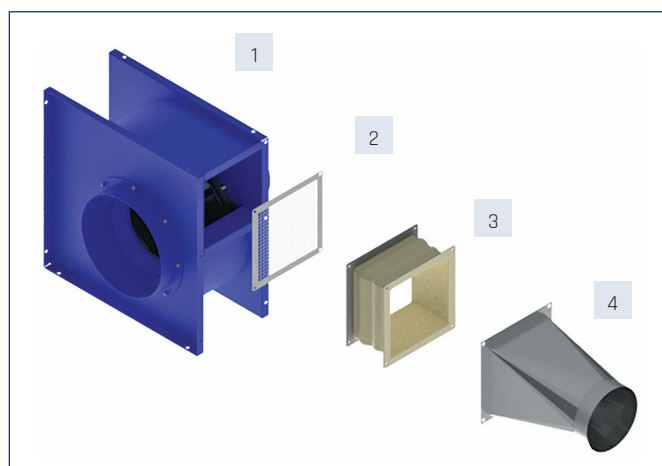
WYMIARY [mm]



Typ	A	B	C	ØD1	E	F	G	H	G1	H1	I	J	K	L	M	S	T	P1	P2	N1	N2	N3	N4	N5	N6	X	Ø0	X2	Ø02
GMB-425-400T LG270	723	864	719	400	318	512	324	322	125	125	361	361	397	397	60	216	226	460	513	30	270	466	632	672	692	12	12	6	12
GMB-450-550T LG270	723	864	719	400	318	512	324	322	125	125	361	361	397	397	60	216	226	460	513	30	270	466	632	672	692	12	12	6	12
GMB-475-750T LG270	802	962	870	500	348	566	365	363	125	125	401	401	437	437	60	233	246	500	545	40	360	586	772	812	832	12	12	6	12
GMB-500-1100T LG270	802	962	886	500	348	566	365	363	125	125	401	401	437	437	60	233	246	500	545	40	360	586	772	812	832	12	12	6	12

AKCESORIA MONTAŻOWE

1	2	3	4
Wentylator	Siatka ochronna	Złącze p-drg.	Redukcja
GMB-250	40541710	40541510	46516671 (d=160)
GMB-265	40541720	40541520	46516672 (d=200)
GMB-280	40541720	40541520	46516672 (d=200)
GMB-315	40541730	40541530	46516673 (d=200)
GMB-355	40541740	40541540	46516674 (d=250) lub 46516678 (d=300)
GMB-400	40541750	40541550	46516675 (d=250)
GMB-425	40541760	40541560	46516676 (d=315) lub 46516679 (d=400)
GMB-450	40541760	40541560	46516676 (d=315) lub 46516679 (d=400)
GMB-475	40541770	40541570	46516677 (d=400)
GMB-500	40541770	40541570	46516677 (d=400)



AKCESORIA ELEKTRYCZNE

Typ	falownik	wyłącznik serwisowy
GMB-250-037T	L 0,4 kW	R-S 3-F + SP, 10A
GMB-265-055T	L 0,75 kW	R-S 3-F + SP, 10A
GMB-280-075T	L 0,75 kW	R-S 3-F + SP, 10A
GMB-315-110T	L 1,5 kW	R-S 3-F + SP, 10A
GMB-355-220T	L 2,2 kW	R-S 3-F + SP, 10A
GMB-400-300T	L 4,0 kW	R-S 3-F + SP, 10A
GMB-425-400T	L 4,0 kW	R-S 3-F + SP, 10A
GMB-450-550T	L 5,5 kW	R-S 3-F + SP, 16A
GMB-475-750T	L 7,5 kW	R-S 3-F + SP, 16A
GMB-500-1100T	L 11,0 kW	R-S 3-F + SP, 25A

Numery artykułów

L 0,4 kW	40016302	L 7,5 kW	40016372
L 0,75 kW	40016312	L 11,0 kW	40016382
L 1,5 kW	40016322	R-S 3-F + SP, 10A	91040908-01
L 2,2 kW	40016332	R-S 3-F + SP, 16A	91040908
L 4,0 kW	40016352	R-S 3-F + SP, 25A	91040910
L 5,5 kW	40016362		

